

## Table of contents

		group/page
Single point fixings		<b>1</b> 1/01-1/04
Partition system		<b>2</b> 2/01-2/10
Sliding door system		<b>3</b> 3/01-3/10
Swing door system		<b>4</b> 4/01-4/09
Handle bars		<b>5</b> 5/01-5/04
Installation tools		<b>6</b> 6/01

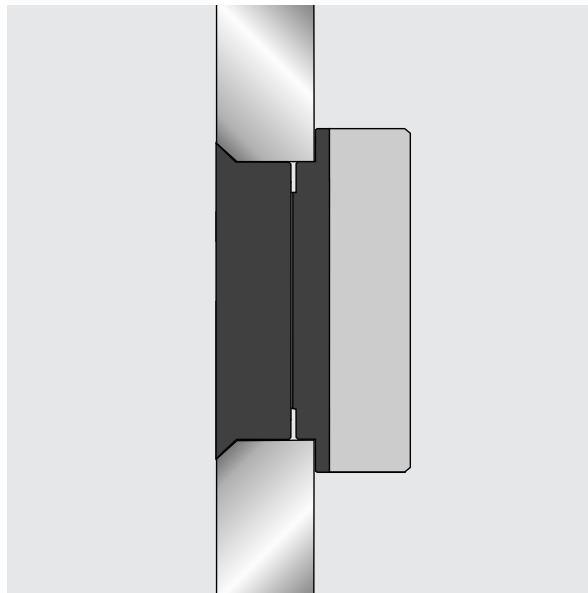


## Single point fixings

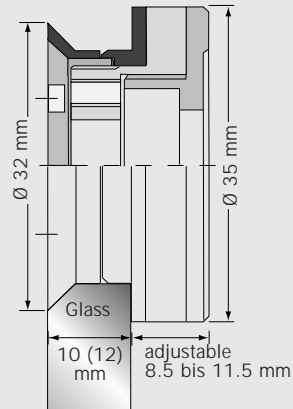
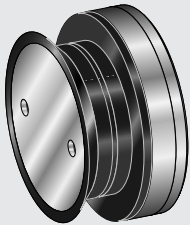
Flush-fitting single point fixing for glass-to-wall installation, to suit individual sheets of toughened glass. 3-dimensional adjustments provide simple, accurate installation for glass elements, even on unlevel surfaces.

Tolerances in alignment of the wall fixing and glass hole preparation can be compensated by post-installation adjustments.

The conical sleeve in its countersunk hole in the glass guarantees a centralised and very secure hold for the fixing every time and in every place.



1



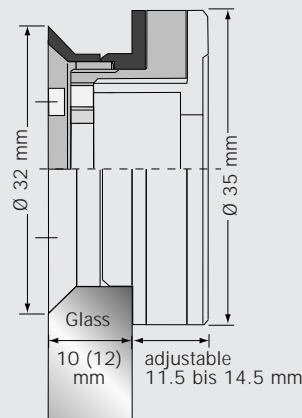
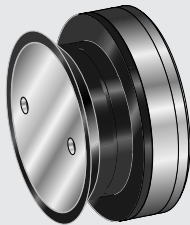
#### Order details

Single point fixing series  
S 32/35

**1**  
Single point fixing, Glass/Wall  
Glass/wall offset  
adjustable 8.5 -11.5 mm

Complete fitting  
10 mm glass thickness:  
Art.- no. 8.21.100.700.99  
12 mm glass thickness:  
Art.- no. 8.21.110.700.99

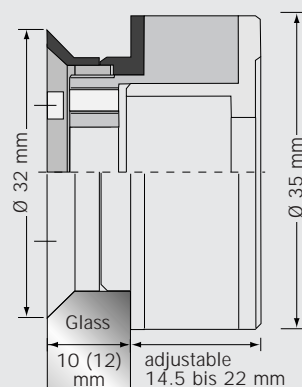
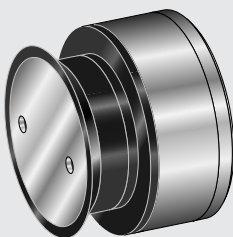
2



**2**  
Single point fixing, Glass/Wall  
Glass/wall offset  
adjustable 11.5-14.5 mm

Complete fitting  
10 mm glass thickness:  
Art.- no. 8.21.101.700.99  
12 mm glass thickness:  
Art.- no. 8.21.111.700.99

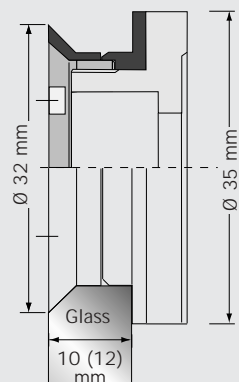
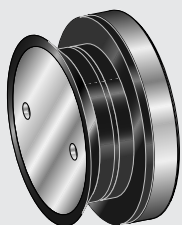
3



**3**  
Single point fixing, Glass/Wall  
Glass/wall offset  
adjustable 14.5-22 mm

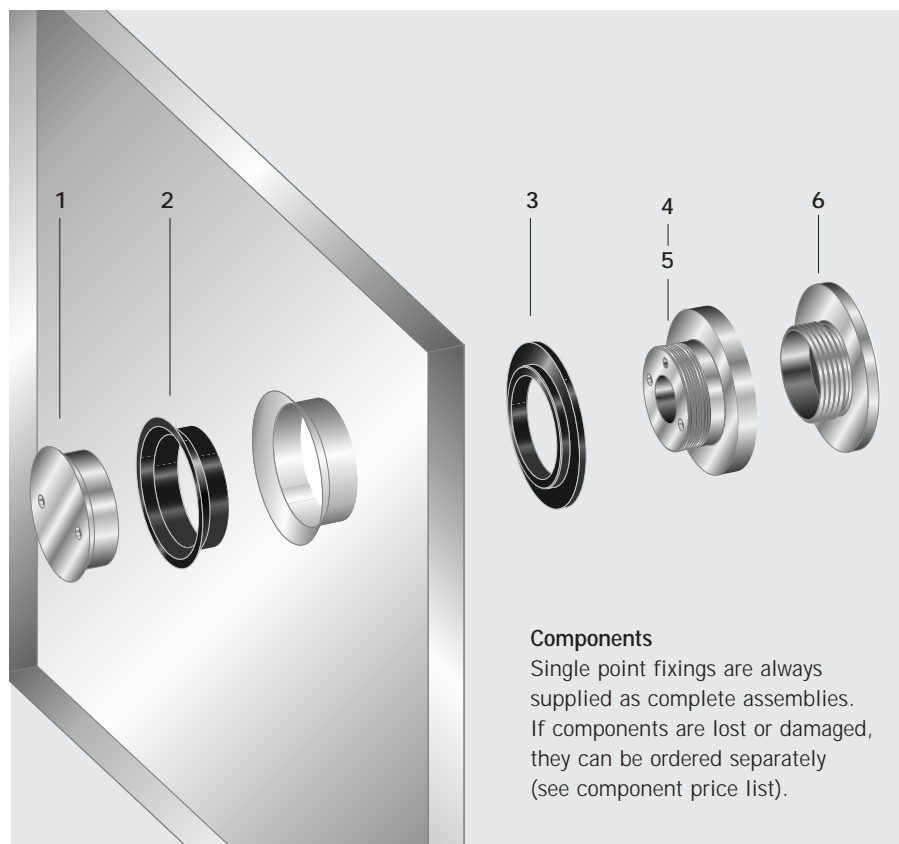
Complete fitting  
10 mm glass thickness:  
Art.- no. 8.21.102.700.99  
12 mm glass thickness:  
Art.- no. 8.21.112.700.99

4



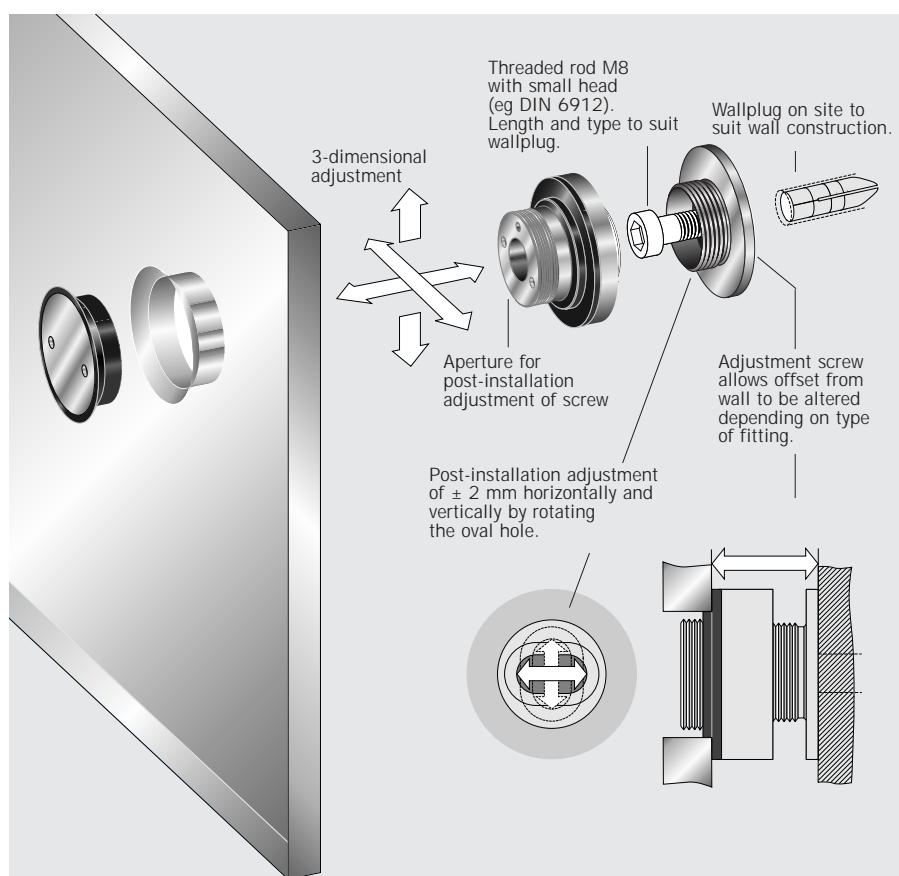
**4**  
Single point fixing, Glass/Wall  
not adjustable

Complete fitting  
10 mm glass thickness:  
Art.- no. 8.21.105.700.99  
12 mm glass thickness:  
Art.- no. 8.21.115.700.99



### Components

- 1** Pin  
internal thread 10 mm  
Art.- no. 8.21.210.001.40  
internal thread 12 mm  
Art.- no. 8.21.212.001.40
- 2** Conical sleeve  
Art.- no. 8.21.233.001.40
- 3** Intermediate sleeve  
Art.- no. 8.21.222.001.40
- 4** Clamp, adjustable  
8.5-11.5 mm  
Art.- no. 8.21.221.001.40  
11.5-14.5 mm  
Art.- no. 8.21.221.001.40  
14.5-22 mm  
Art.- no. 8.21.226.001.40
- 5** Clamp, fixed  
Art.- no. 8.21.227.001.40
- 6** Adjustment screw  
8.5-11.5 mm  
Art.- no. 8.21.220.001.40  
11.5-14.5 mm  
Art.- no. 8.21.220.002.40  
14.5-22 mm  
Art.- no. 8.21.225.001.40

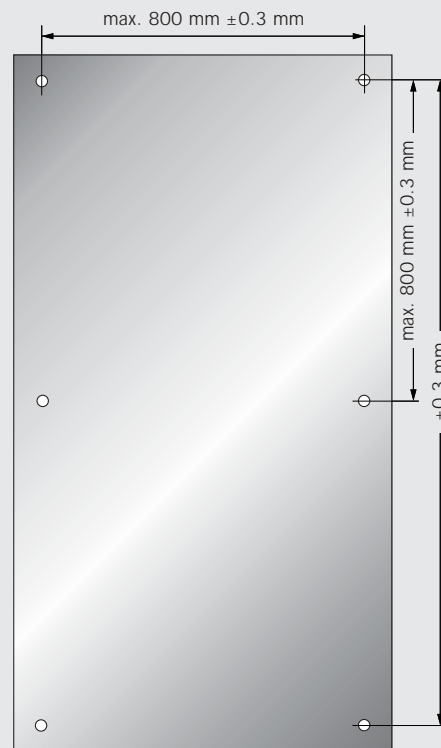


### Installation and adjustment

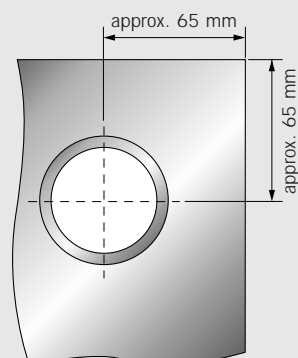
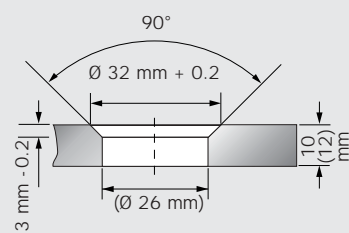
- A** Mark the fixing hole positions on the wall, as shown on the detailed plans.
- B** Drill a hole ( $\varnothing 8$  mm) for the wallplug.
- C** Unscrew the pin from the single fixing point assembly, and secure the clamp element to the wall. Do not tighten screws yet, to allow for some moving of the point fixing.
- D** Loosen adjustment screw and secure in end position.
- E** Adjust point fixing and secure by grub screw.
- F** Insert the pin, and secure firmly with the special driver key. (Torque min. 15 Nm).

**Glass preparation**  
for 10 mm and 12 mm  
thick toughened glass.

CNC machine  
glass preparation  
with a tolerance of  
max.  $\pm 0.3$  mm  
is recommended.



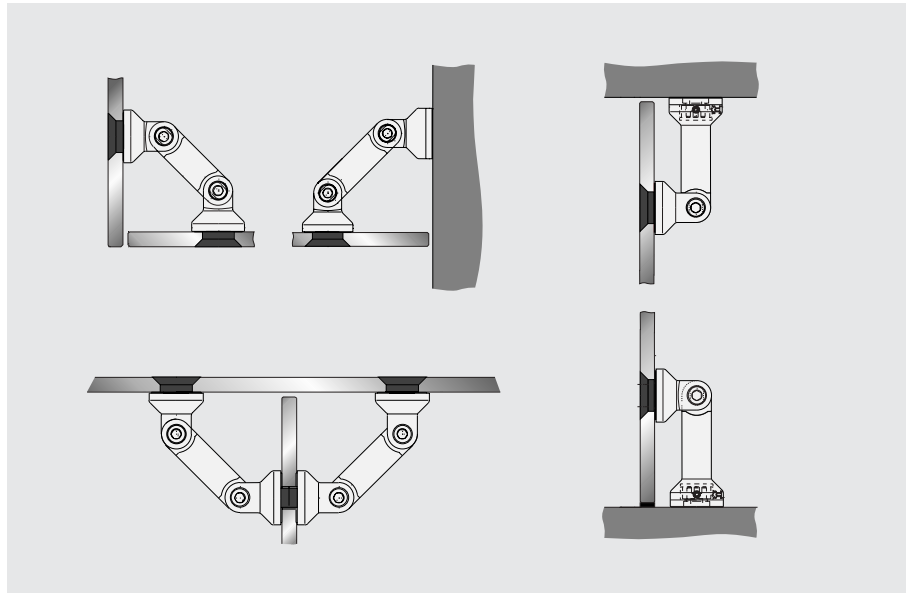
Countersunk holes from the front side



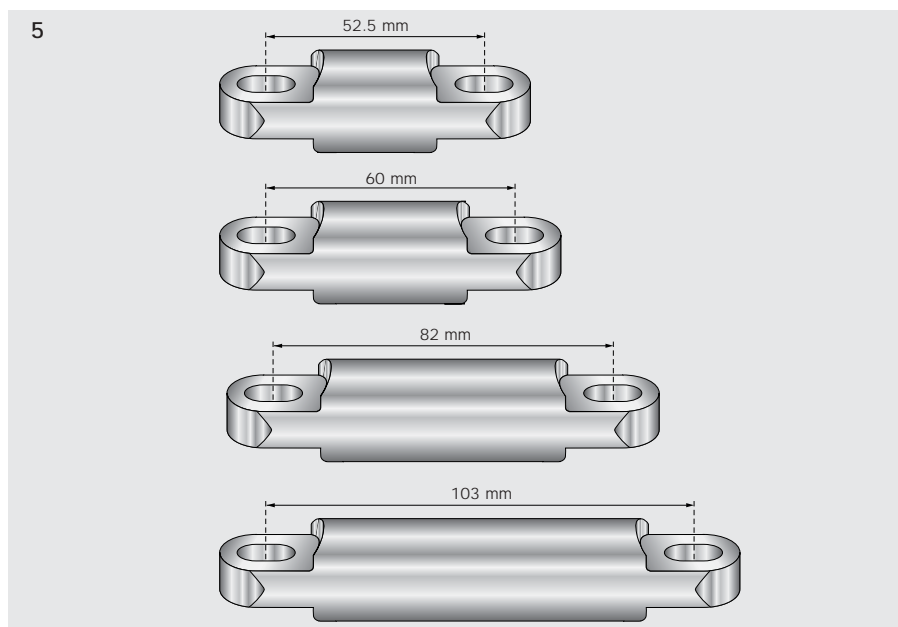
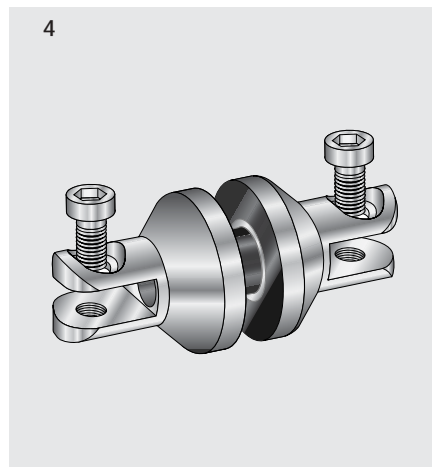
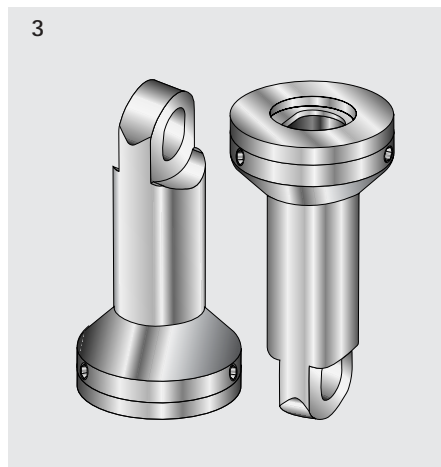
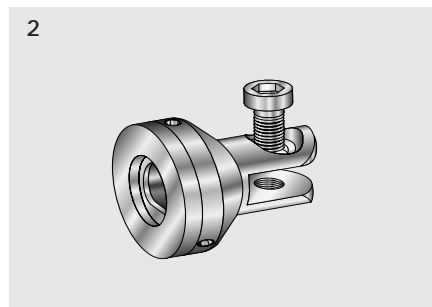
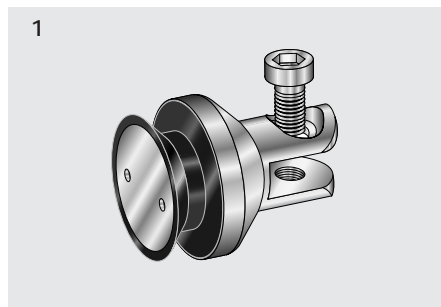


## Connecting system

The following fittings offer great flexibility in the positioning and connecting of glass sheets to each other, or the floor, ceiling, walls - wherever you want. Building tolerances can be compensated for by means of a variety of adjustment options. Please see next page for glass preparation details.



## Connecting elements



### Order details

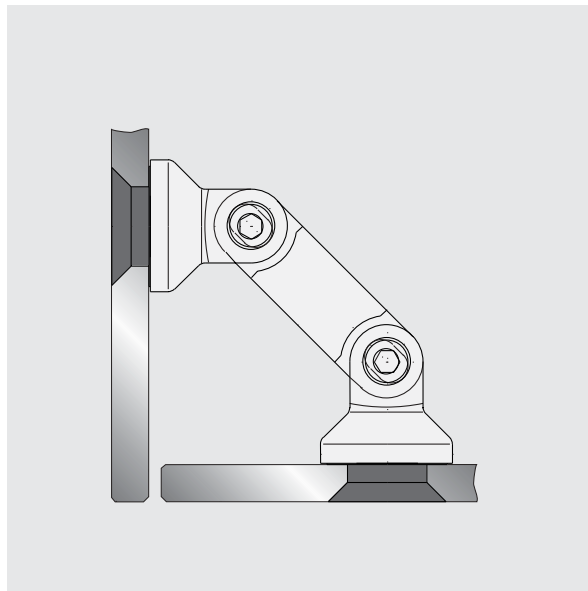
**1**  
Pivoting glass clamp  
Art.-no. 8.21.121.700.99

**2**  
Pivoting wall fixing  
Art.-no. 8.21.141.700.99

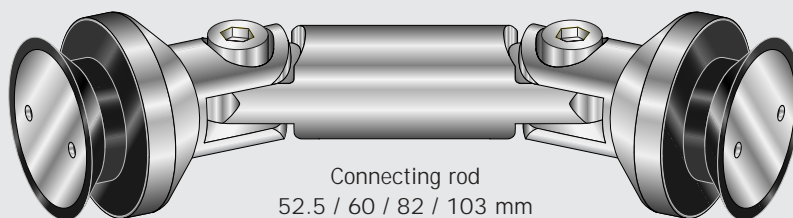
**3**  
Ceiling/floor fixing  
Art.-no. 8.21.146.700.99

**4**  
Clamping connector  
Art.-no. 8.21.150.700.99

**5**  
Connecting rod  
Length 52,5 mm  
Art.-no. 8.21.301.002.40  
Length 60 mm  
Art.-no. 8.21.301.004.40  
Length 82 mm  
Art.-no. 8.21.301.003.40  
Length 103 mm  
Art.-no. 8.21.301.005.40

Glass/glass  
corner connector

1



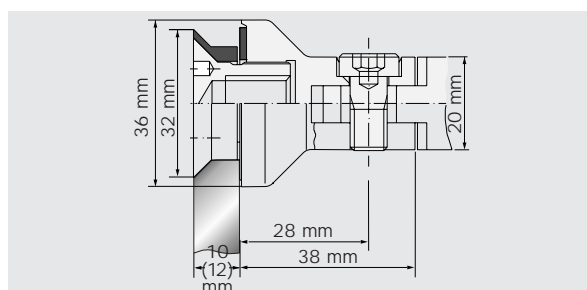
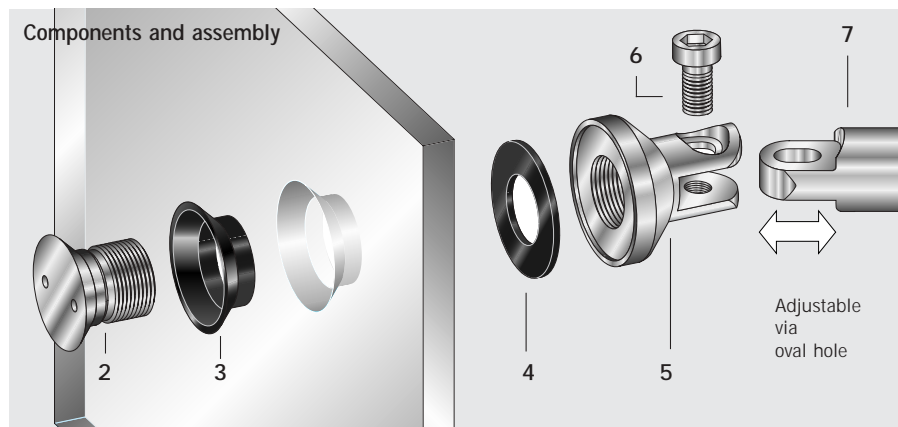
## Order details

- 1**  
Complete fitting  
with connecting rod  
52.5 mm  
Art.-no. 8.21.120.700.99
- Complete fitting with  
connecting rod 60 mm  
Art.-no. 8.21.122.700.99
- Complete fitting with  
connecting rod 82 mm  
Art.-no. 8.21.125.700.99
- Complete fitting with  
connecting rod 103 mm  
Art.-no. 8.21.130.700.99

## Components

- 2**  
Pin with external thread  
Art.-no. 8.21.201.002.40
- 3**  
Conical sleeve  
Art.-no. 8.21.224.001.40
- 4**  
Gasket  
Art.-no. 8.21.201.004.40
- 5**  
Pivoting clamp  
Art.-no. 8.21.301.001.40
- 6**  
Connecting bolt  
Art.-no. 8.00.013.753.30
- 7**  
Connecting rod of  
chosen length

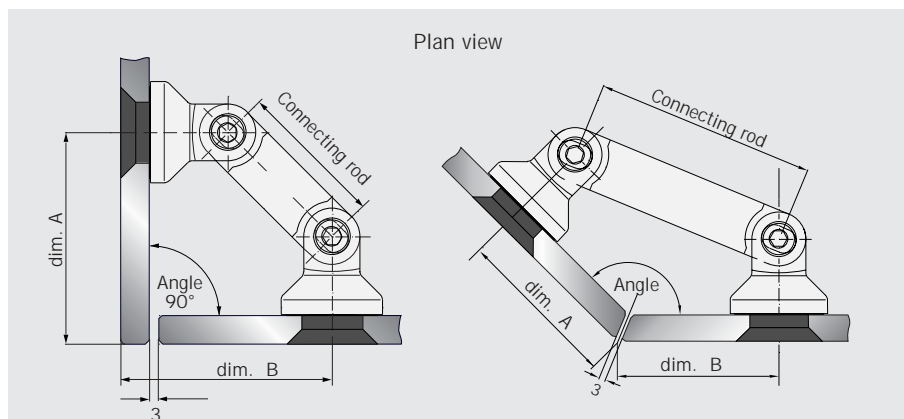
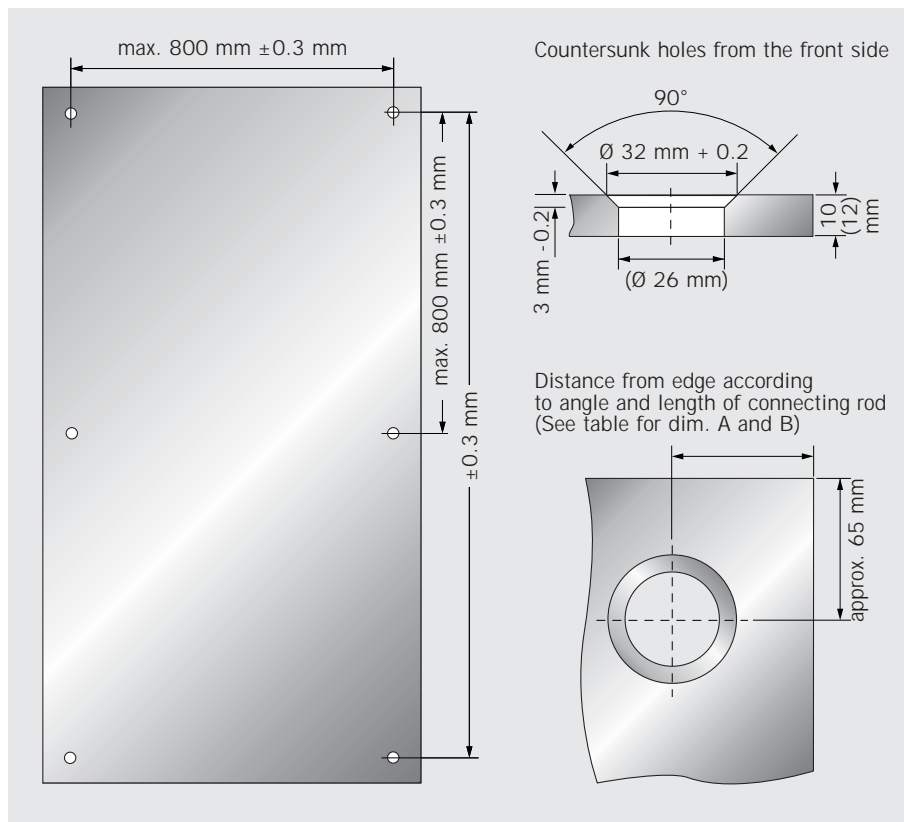
## Components and assembly



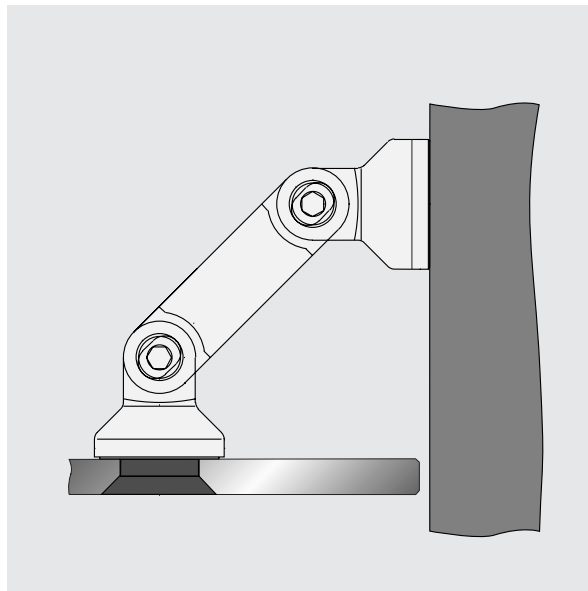


**Glass preparation**  
for glass/glass corner  
connectors for 10 mm and  
12 mm thick toughened  
glass.

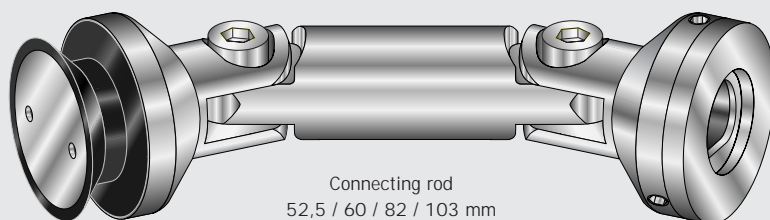
CNC machine  
glass preparation  
with a tolerance of  
max.  $\pm 0.3$  mm  
is recommended.



Angle	Length of connecting rod in mm			
	52.5	60	82	103
	dim. in mm for 10 mm glass. For other glass thickness please adapt accordingly.			
	A/B	A/B	A/B	A/B
90°	75	80	96	
95°	70	75	90	
100°	66	71	85	
105°	62	67	81	
110°	59	63	77	
115°	55	60	73	
120°	52	56	69	
125°	49	54	66	
130°	47	51	63	
135°	44	48	60	
180°				50

Glass/wall  
corner connector

1



## Order details

1

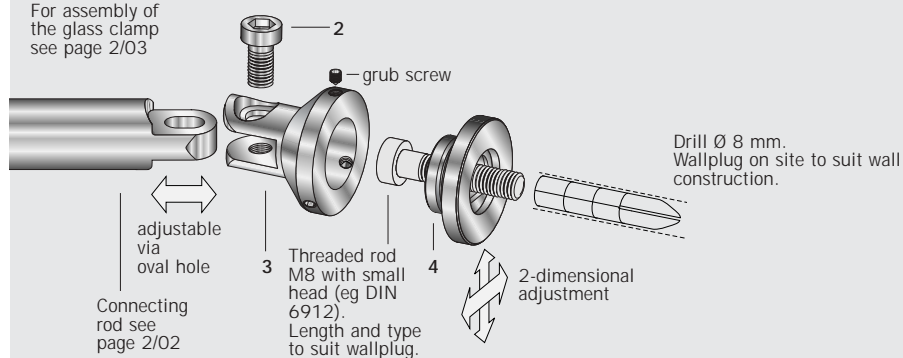
Complete fitting with  
connecting rod 52,5 mm  
Art.-no. 8.21.139.700.99

Complete fitting with  
connecting rod 60 mm  
Art.-no. 8.21.140.700.99

Complete fitting with  
connecting rod 82 mm  
Art.-no. 8.21.142.700.99

## Components and assembly of the wall fixing

For assembly of  
the glass clamp  
see page 2/03



## Components

2

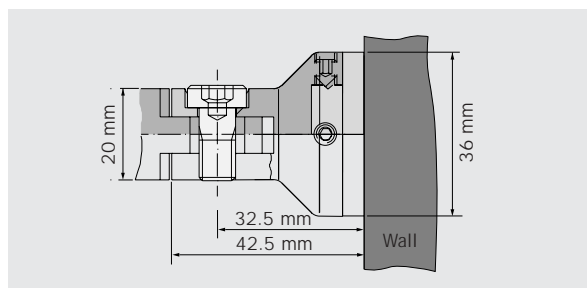
Connecting bolt  
Art.-no. 800.01.375.3.30

3

Pivoting clamp  
Art.-no. 8.21.303.001.40

4

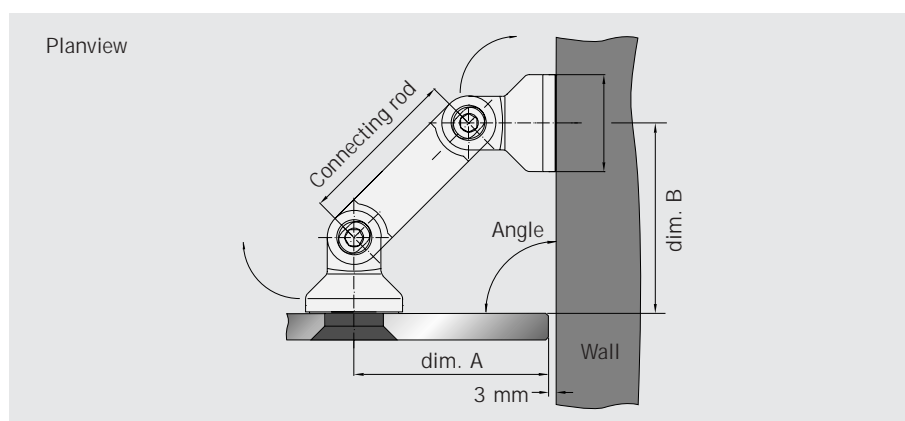
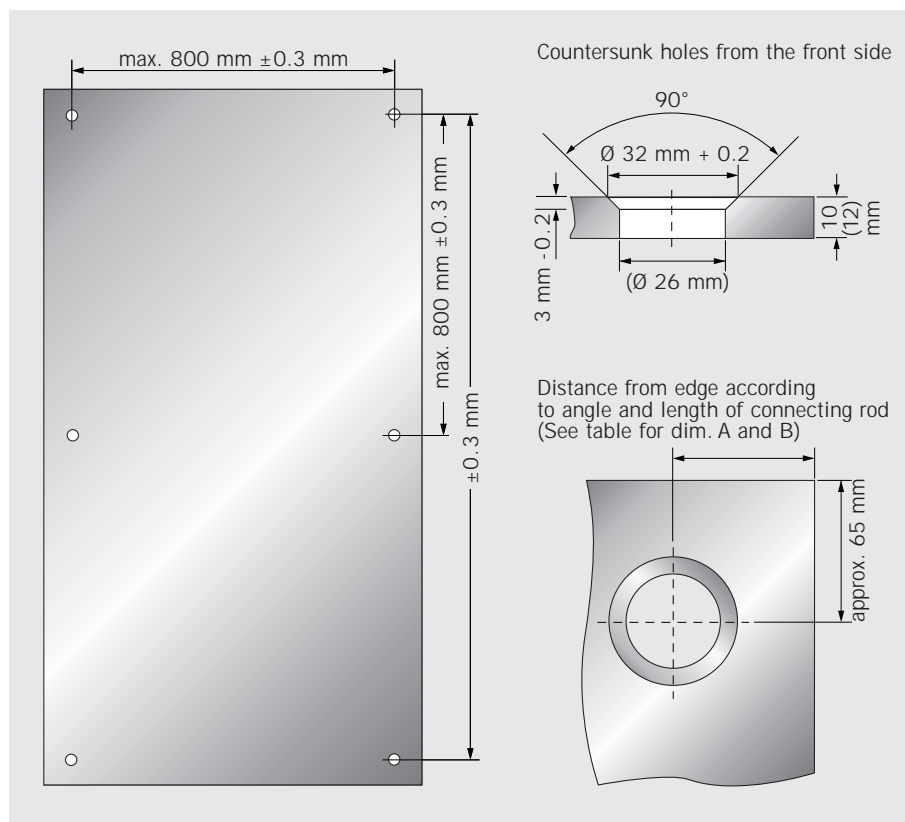
Fixing plate  
Art.-no. 8.21.303.002.40



### Glass preparation

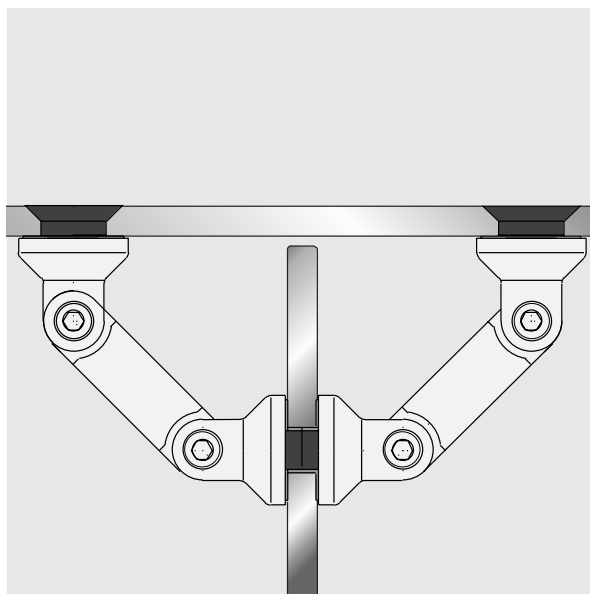
for glass/glass corner connectors for 10 mm and 12 mm thick toughened glass.

CNC machine glass preparation with a tolerance of max.  $\pm 0.3$  mm is recommended.

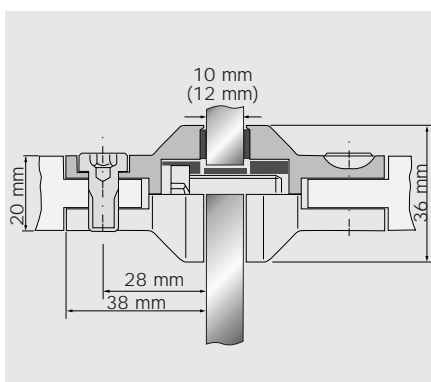
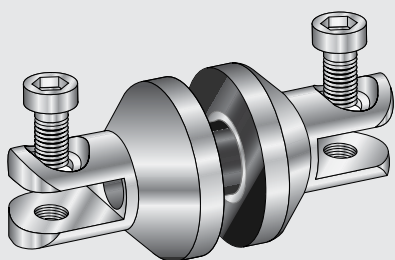


Angle	Length of connecting rod in mm					
	52.5		60		82	
	dim. in mm					
	A	B	A	B	A	B
90°	67	65	72	70	87,5	86

## Clamping connector



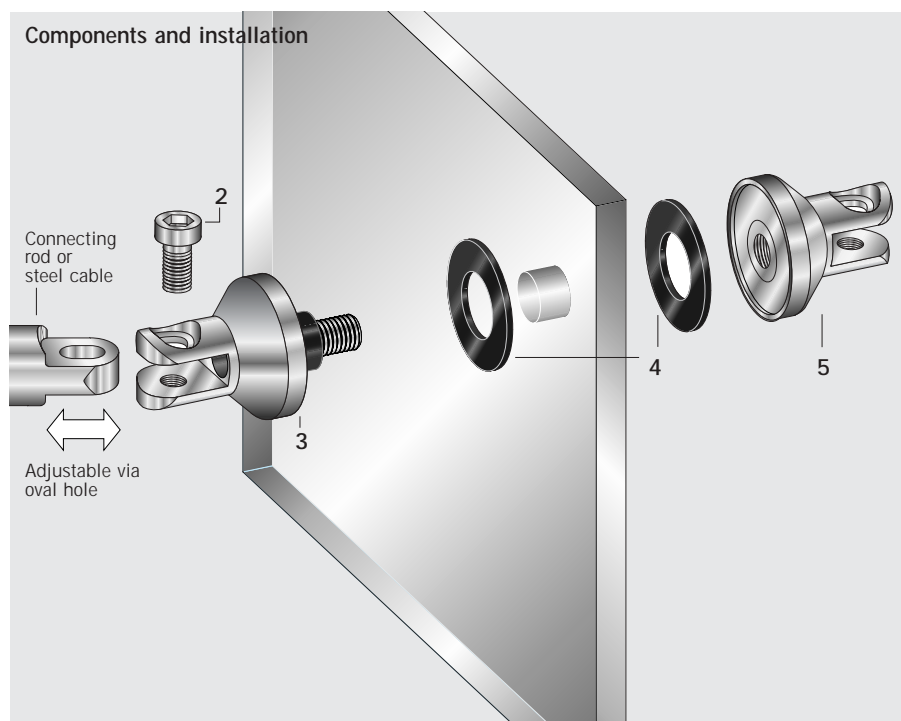
1



## Order details

**1**  
Clamping connector  
Complete assembly  
Art.-no. 8.21.150.700.99

## Components and installation



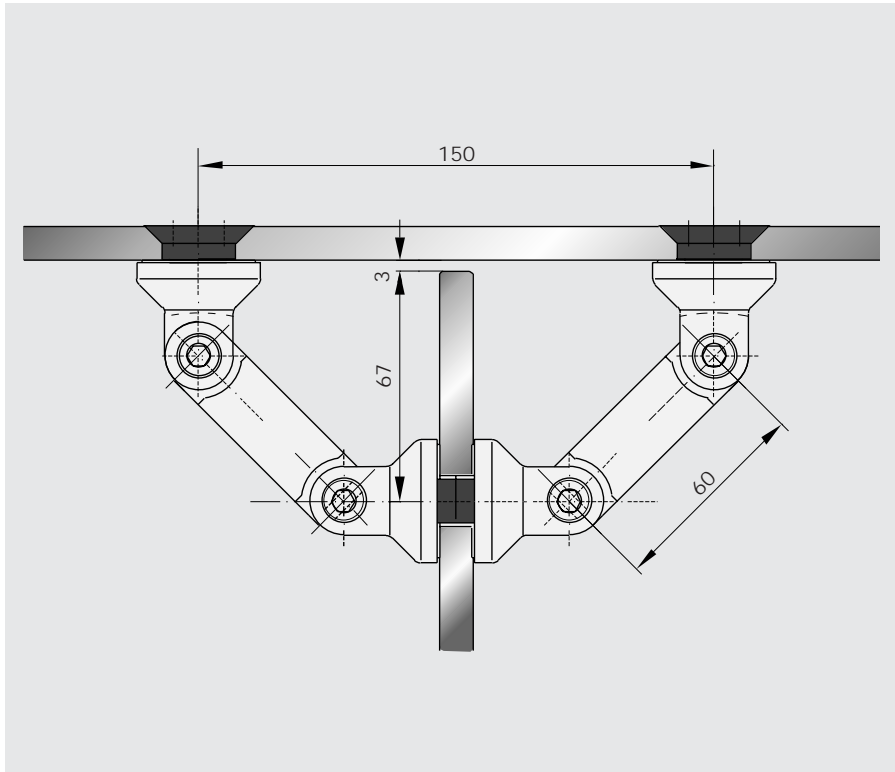
## Components

**2**  
Connecting bolt  
Art.-no. 8.00.012.513.30

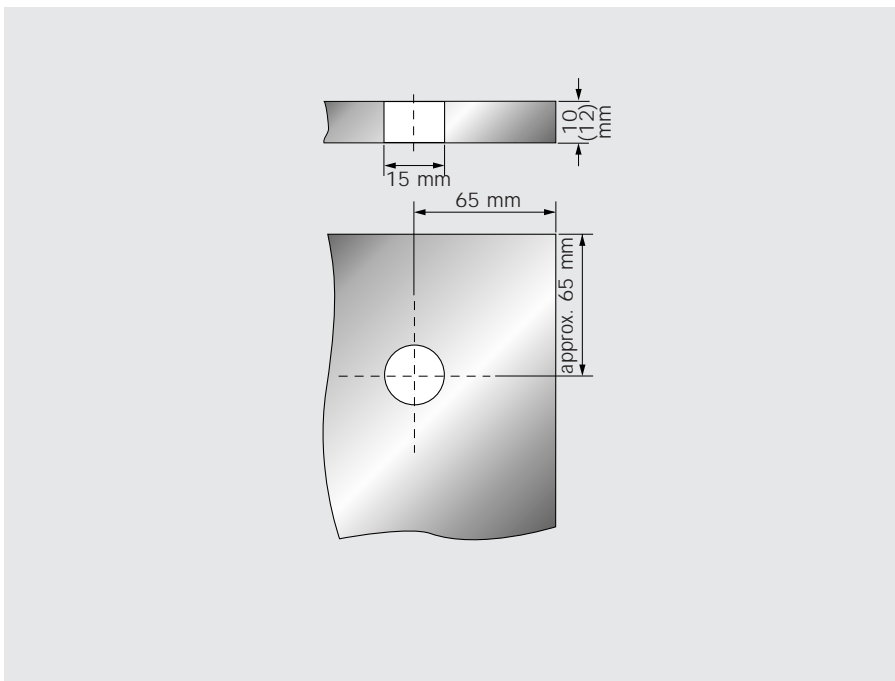
**3**  
Pivoting clamp  
Art.-no. 8.21.301.006.40

**4**  
Gasket  
Art.-no. 8.21.201.004.40

**5**  
Pivoting clamp  
Art.-no. 8.21.301.001.40



Layout example  
(Plan view)

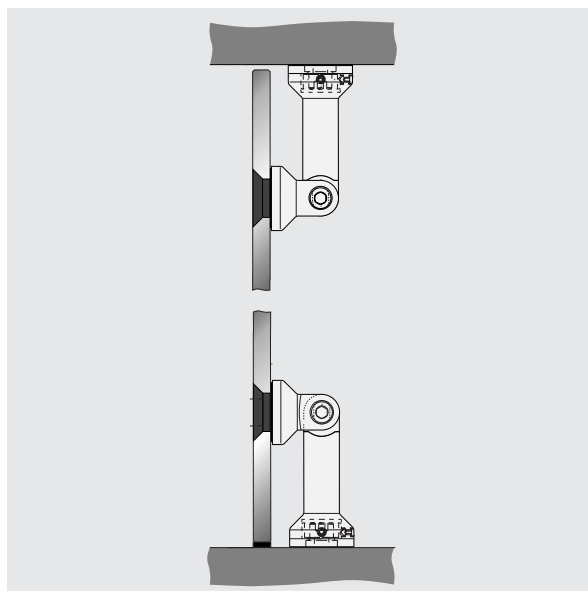


Glass preparation

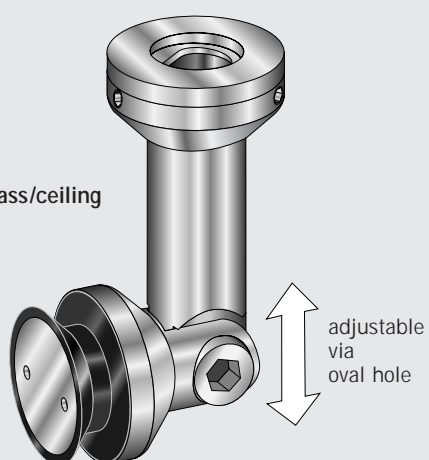
**Corner connector 90°**

Glass/ceiling

Glass/floor

**1**

Glass/ceiling



Hanging glass from the ceiling is permissible where there is other support for the glass sheet. (Limited load-carrying capacity.)

2-dimensional adjustment

Threaded rod M8 with small head (eg DIN 6912). Length and type to suit wallplug.

Grub screw

Drill Ø8 mm  
Wallplug on site to suit ceiling construction.

**2****3****Order details****1**

Complete fitting suitable for glass/ceiling and glass/floor connection  
Art.-no. 8.21.145.700.99

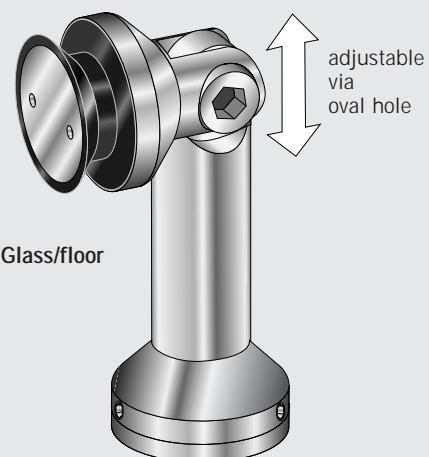
**Components**

Fixing plate  
Art.-no. 8.21.303.002.40

**3** Column  
Art.-no. 8.21.304.001.40

**1**

Glass/floor



Grub screw

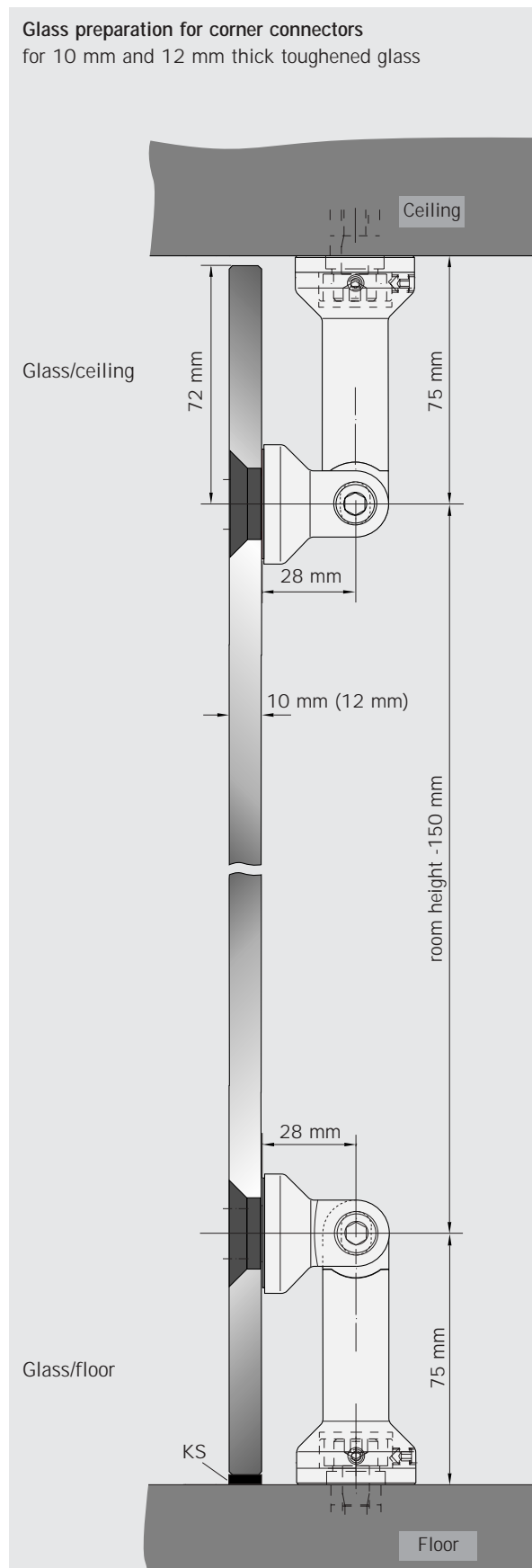
Threaded rod M8 with small head (eg DIN 6912). Length and type to suit wallplug.

2-dimensional adjustment

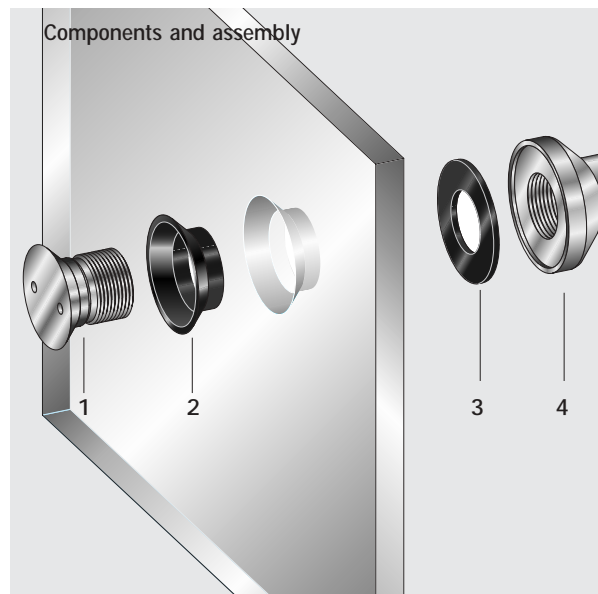
Drill Ø 8mm  
Wallplug on site to suit floor construction.

**3****2**

# Glass preparation for corner connectors for 10 mm and 12 mm thick toughened glass

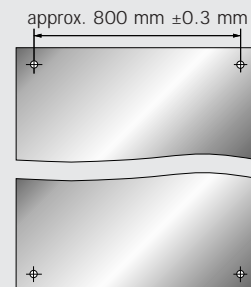


## Components and assembly

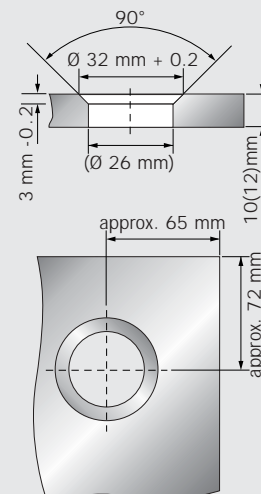


## Glass preparation

CNC machine glass preparation  
with a tolerance of max.  $\pm 0.3$   
mm is recommended.



Countersunk holes from  
the front side



## Components

- 1**  
Pin with external thread  
Art.-no. 8.21.201.002.40
- 2**  
Conical sleeve  
Art.-no. 8.21.224.001.40
- 3**  
Gasket  
Art.-no. 8.21.201.004.40
- 4**  
Pivoting clamp  
Art.-no. 8.21.301.001.40

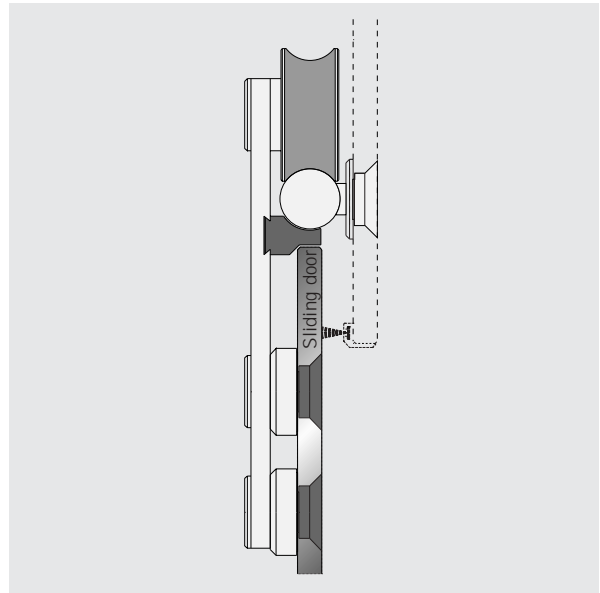


## Sliding door system

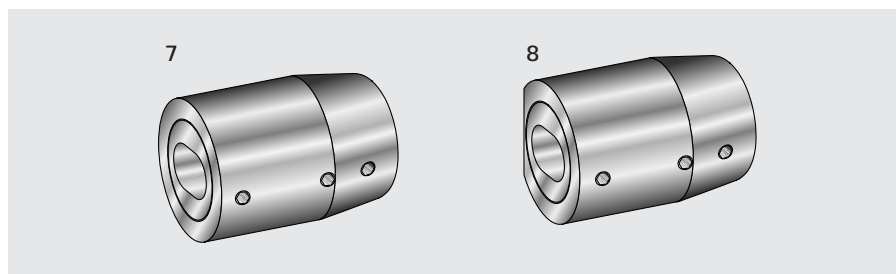
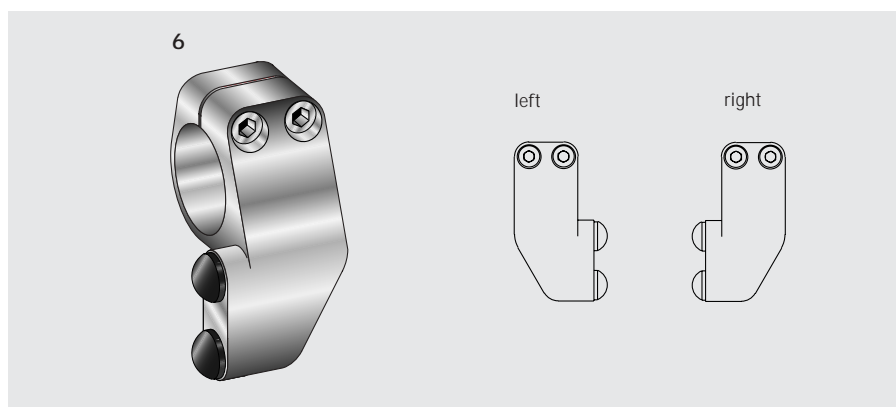
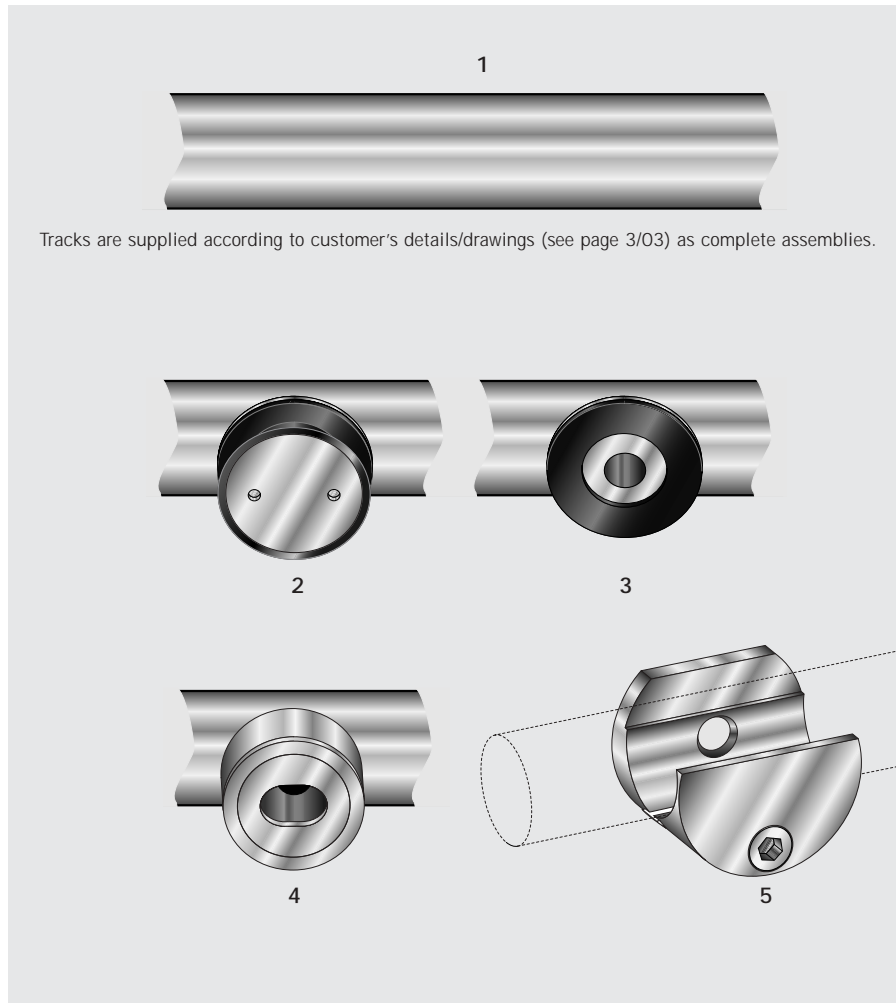
The components and accessories provided in this system allow sliding doors to be positioned in front of openings or incorporated into toughened glass partitioning.

Adjustable endstops above and below ensure exact door positioning, and the floor guide stabilises the door in movement.

Perimeter brush seals prevent drafts and help to reduce noise transfer.







#### Order details

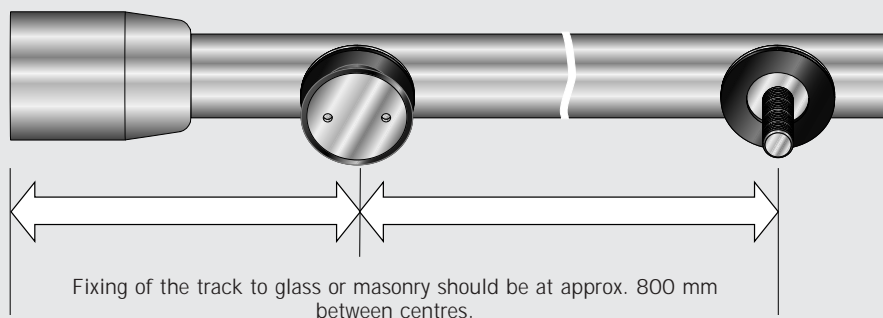
- 1  
Track with fixings for glass  
Art.-no. 8.21.405.700.99  
Track with fixings for wall  
Art.-no. 8.21.406.700.99  
Track, undrilled  
Art.-no. 8.21.407.700.99  
Track, bent  
Art.-no. 8.21.408.700.99
- 2  
Track/glass single point  
fixing, fixed  
Art.-no. 8.21.410.700.99  
Track/glass single point  
fixing, centering  
Art.-no. 8.21.411.700.99
- 3  
Track/wall flange  
(screw on site)  
Art.-no. 8.21.970.017.50
- 4  
Wall fixing, adjustable  
Art.-no. 8.21.412.700.99
- 5  
Clamp fixing for track  
(see page 3/03)
- 6  
Door stop upper left  
Art.-no. 8.21.420.700.99  
Door stop upper right  
Art.-no. 8.21.421.700.99
- 7  
Sliding sleeve for wall fixing,  
round  
Art.-no. 8.21.441.700.99
- 8  
Sliding sleeve for wall fixing,  
flattened  
Art.-no. 8.21.440.700.99

**Supply and fixing of track**

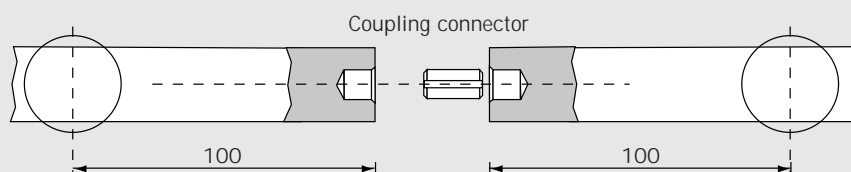
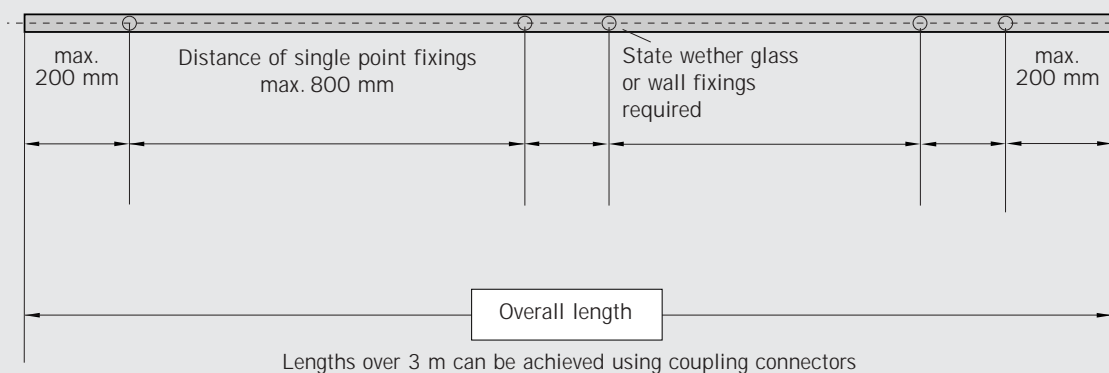
Sliding door track is prepared according to customer's drawings, and supplied as a complete assembly for installation onto glass or masonry as indicated (Fixing screws for wall on site).

Where the track is to be fixed to glass, care should be taken to ensure that the fixing points on the track line up with the holes prepared in the glass. Tolerance allowed in the length must not exceed  $\pm 0.3$  mm.

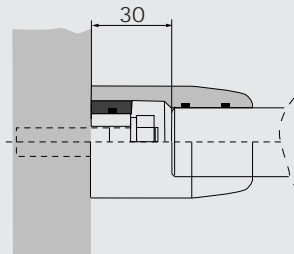
**Please note!**  
The placing of the single point fixings and stops has to be determined according to width of door.



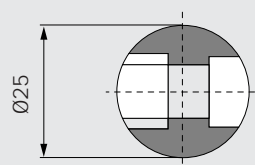
**Please note!**  
To ensure exact preparation, we require the following:



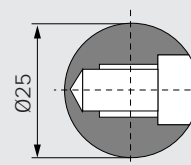
Track reduction measurement for wall fixing with sliding sleeve



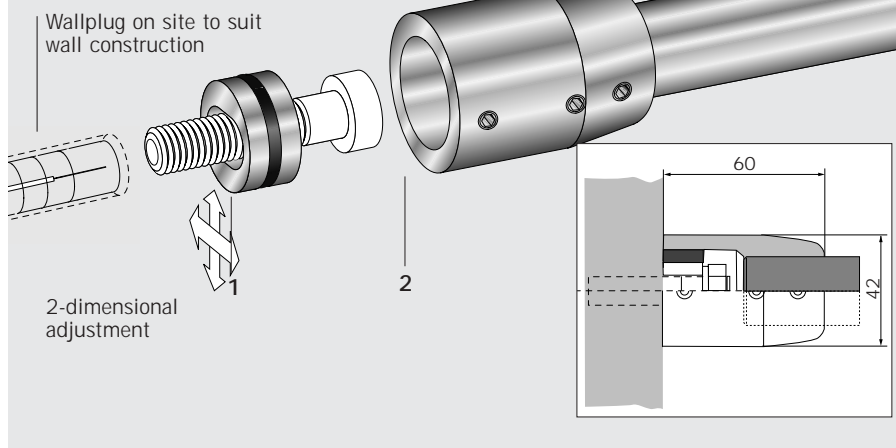
Sliding door track with drill holes for wall fixing with sliding sleeve



Sliding door track with drill holes for glass fixing with fixing-points



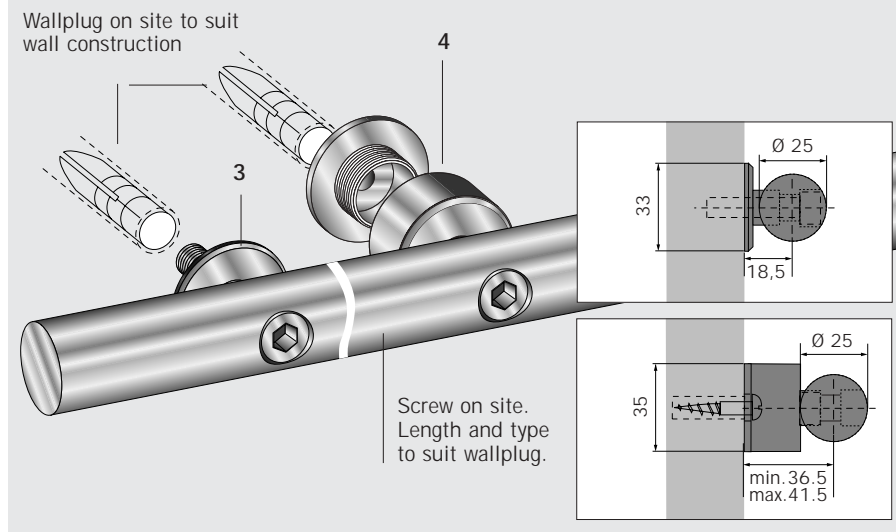
### Components and assembly of track for wall fixing with sliding sleeve



### Components

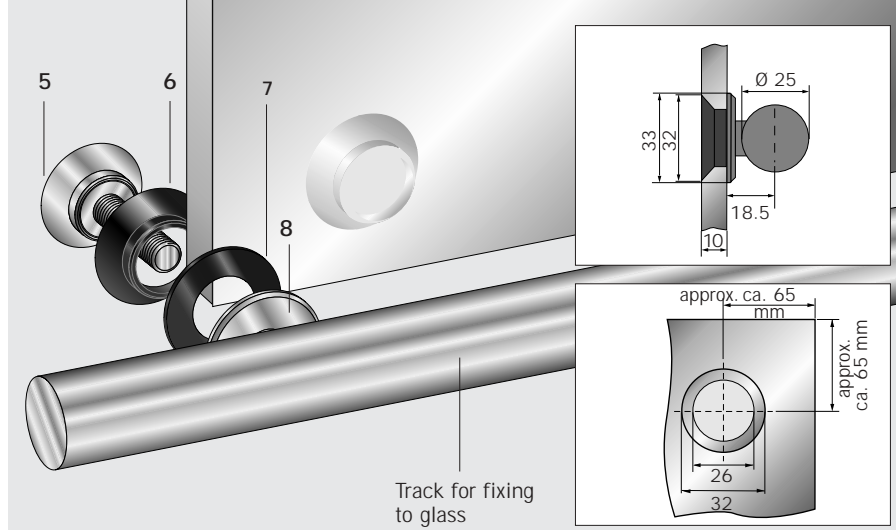
- 1  
Wall fixing  
Art.-no. 8.21.974.004.40
- 2  
Sliding sleeve round  
Art.-no. 8.21.974.001.40
- 3  
Track/wall flange  
Art.-no. 8.21.970.017.50
- 4  
Wall fixing, adjustable  
Art.-no. 8.21.412.700.99

### Components and assembly of track for wall fixing



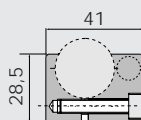
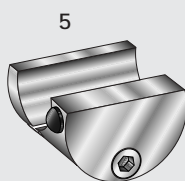
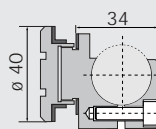
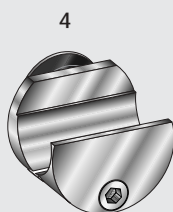
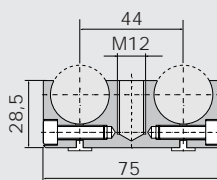
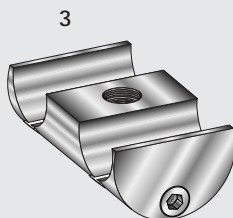
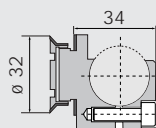
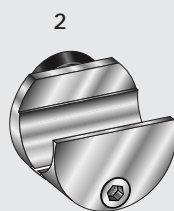
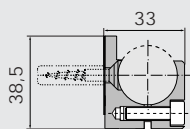
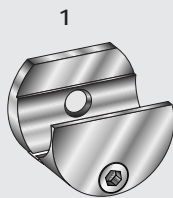
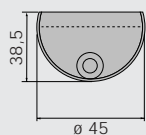
- 5  
Pin  
Art.-no. 8.21.991.001.40
- 6  
Conical sleeve  
Art.-no. 8.21.224.001.40
- 7  
Gasket  
Art.-no. 8.21.970.018.40
- 8  
Flange  
Art.-no. 8.21.970.017.50

### Components and assembly of track for fixing to glass



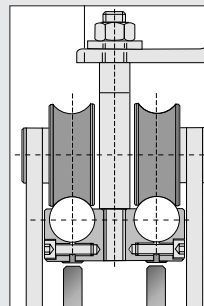
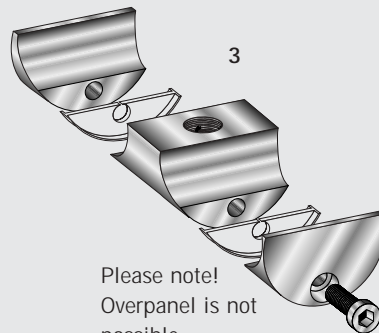
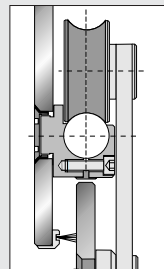
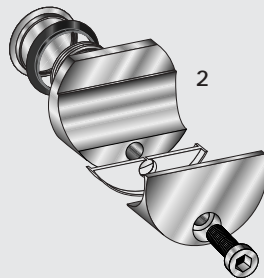
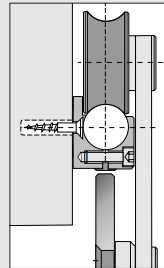
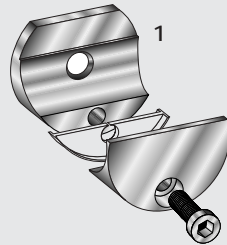
**Clamp fixing for track**

Track is not drilled when using these clamp fixings. Curved, bi-parting and parallel sliding doors can be constructed with these components.

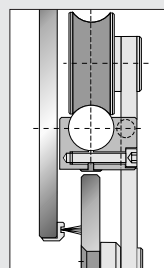
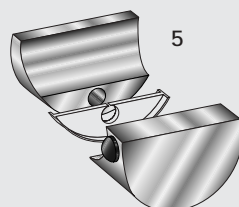
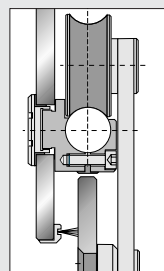
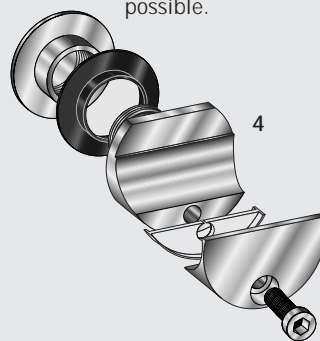
**Order details**

- 1**  
Clamp fixing for track,  
wall fixing  
Art.-no. 8.21.153.700.99
- 2**  
Clamp fixing for track,  
countersunk single point  
fixing  
Art.-no. 8.21.151.700.99
- 3**  
Clamp fixing for track,  
double sliding door  
Art.-no. 8.21.154.700.99
- 4**  
Clamp fixing for track,  
single point fixing for  
mounting onto glass  
Art.-no. 8.21.152.700.99
- 5**  
Door stop  
left or right  
Art.-no. 8.21.155.700.99

Please note!  
Max distance  
between clamp  
fixings for tracks =  
1/2 door width.



Please note!  
Overpanel is not  
possible.

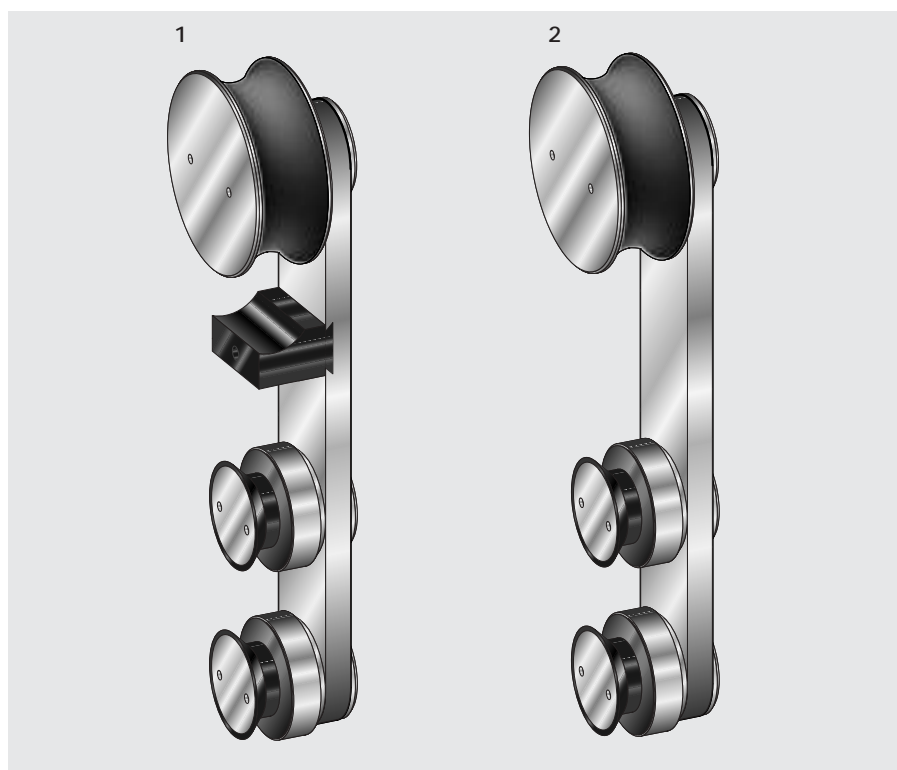


#### Installation of clamp fixing

- A Fix clamp to  
glass or  
masonry.
- B Lay track onto  
clamp and  
tighten by screw.
- C Hang roller  
onto track.
- D Base door panel  
onto spacer  
blocks (7 or  
15 mm gap,  
depending on  
type of floor  
guide).  
Connect door  
with roller.

#### Order details

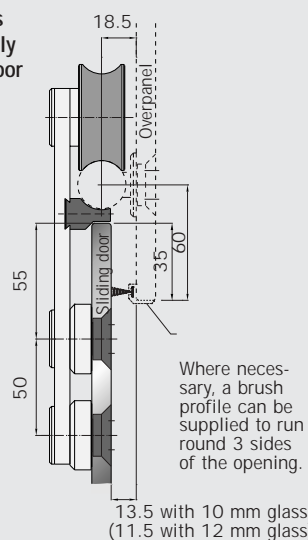
- 1**  
Clamp fixing for track,  
wall fixing  
Art.-no. 8.21.153.700.99
- 2**  
Clamp fixing for track,  
countersunk single  
point fixing  
Art.-no. 8.21.151.700.99
- 3**  
Clamp fixing for track,  
double sliding door  
Art.-no. 8.21.154.700.99
- 4**  
Clamp fixing for track,  
single point fixing  
for mounting onto glass  
Art.-no. 8.21.152.700.99
- 5**  
Door stop  
left or right  
Art.-no. 8.21.155.700.99



## Order details

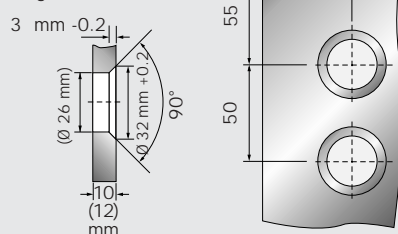
**1**  
Sliding door roller  
Complete fitting  
with stabilizer  
for 10 mm glass thickness  
Art.-no. 8.21.400.700.99  
for 12 mm glass thickness  
Art.-no. 8.21.401.700.99

**2**  
Sliding door roller  
Complete fitting  
without stabilizer  
for 10 mm glass thickness  
Art.-no. 8.21.402.700.99  
for 12 mm glass thickness  
Art.-no. 8.21.403.700.99

Components  
and assembly  
of sliding door  
rollers

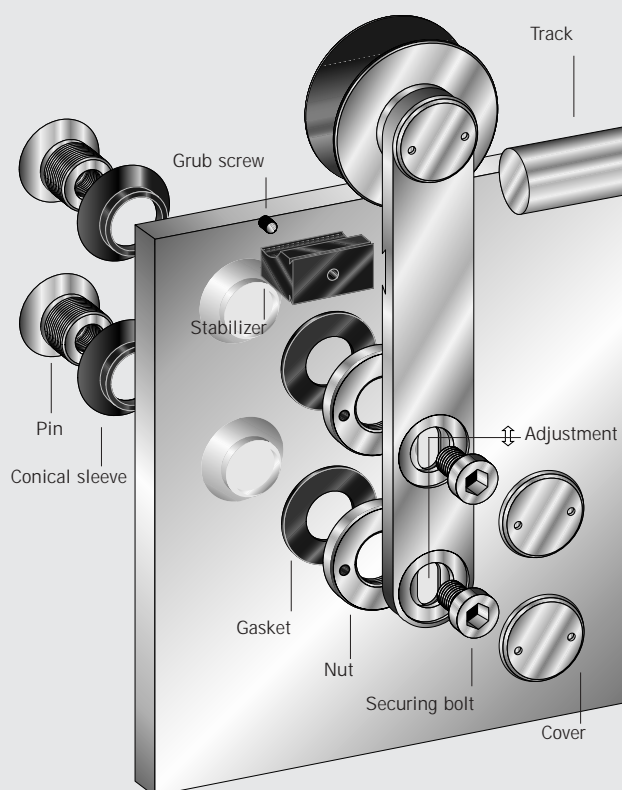
## Glass preparation

For 10 (12) mm thick  
toughened glass



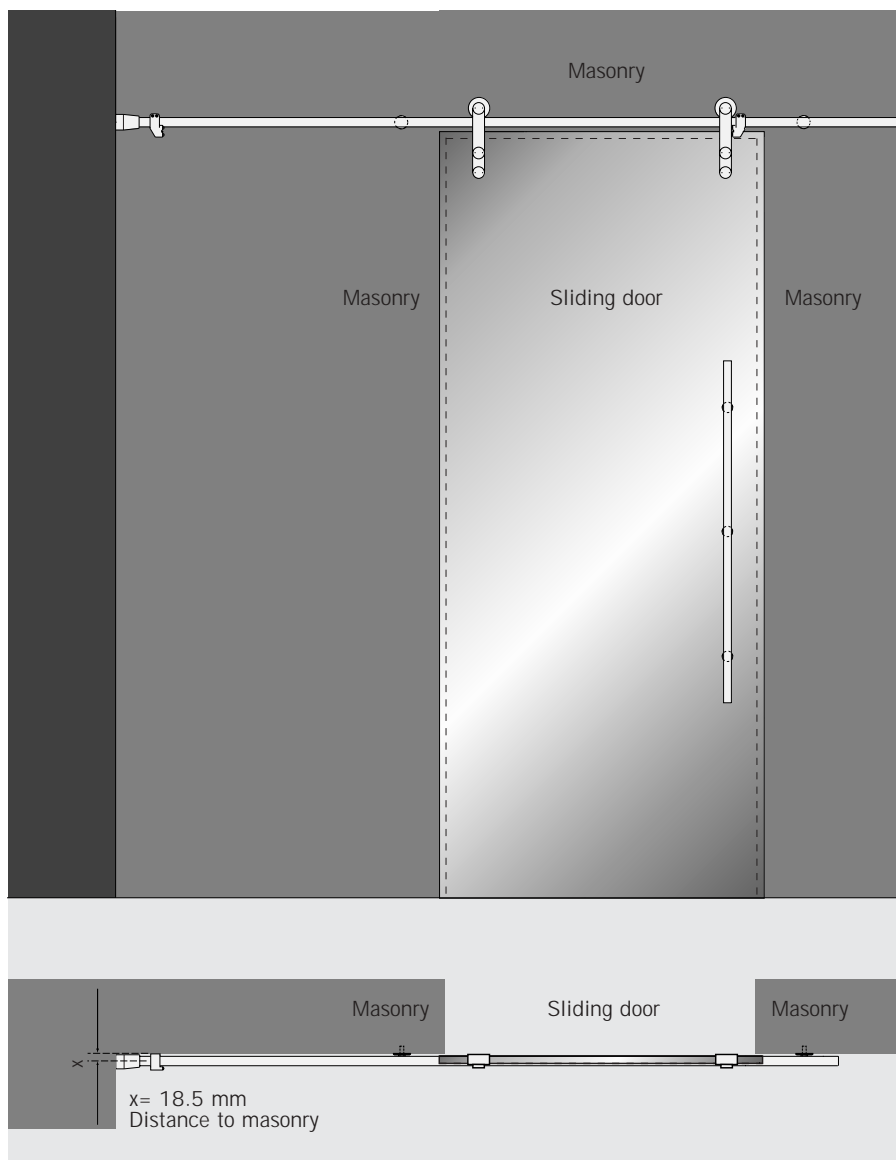
Countersunk hole on the other side

CNC machine glass preparation with a tolerance of max.  $\pm 0.3$  mm is recommended





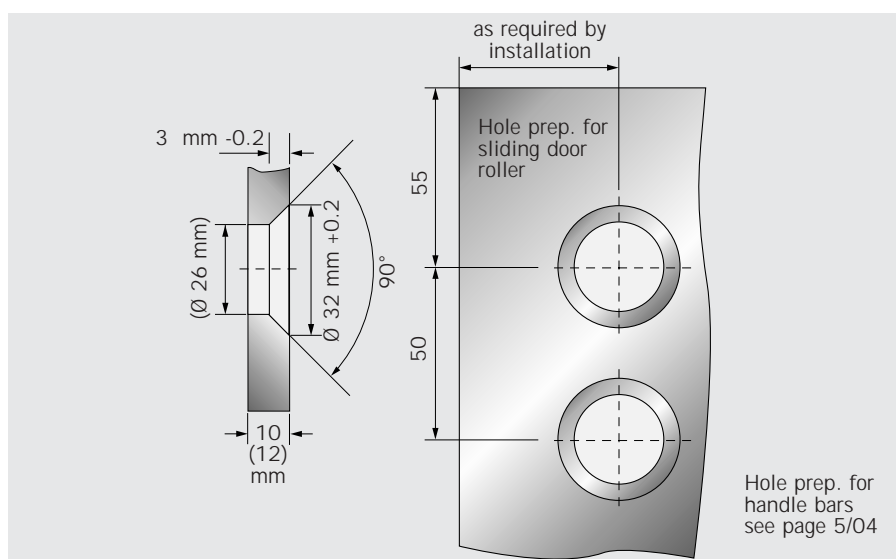
Sliding door in  
front of wall opening



#### Glass preparation for sliding door

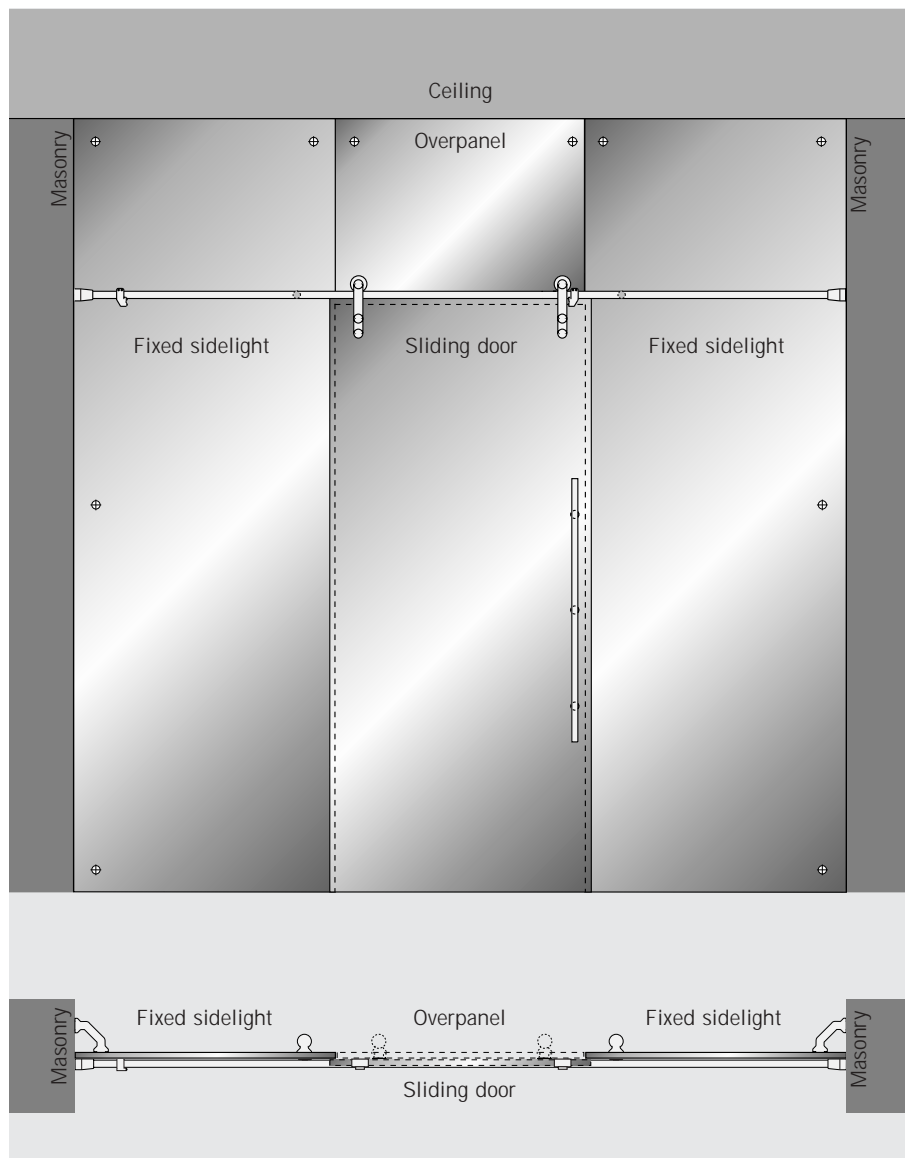
For 10 (12) mm thick  
toughened glass

CNC machine glass  
preparation with a tolerance  
of max.  $\pm 0.3$  mm is recom-  
mended





## Sliding door with 2 sidelights and overpanels



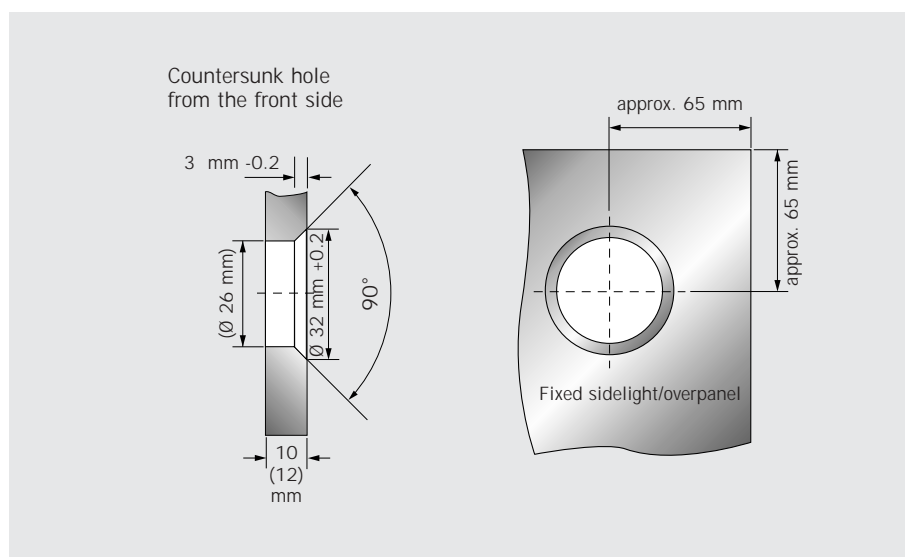
### Glass preparation for sidelight and overpanel installation using corner connectors

For 10 (12) mm thick toughened glass

### Glass preparation for sliding door

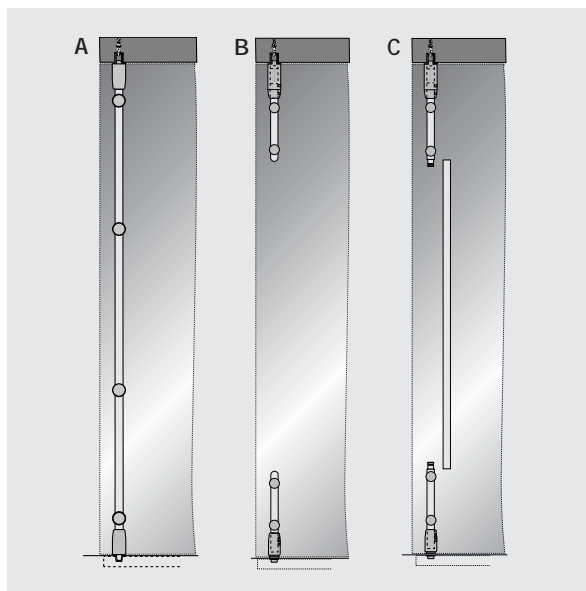
Hole prep. for sliding door rollers: see page 3/07

Hole prep. for handle bars: see page 5/04



## Swing door system

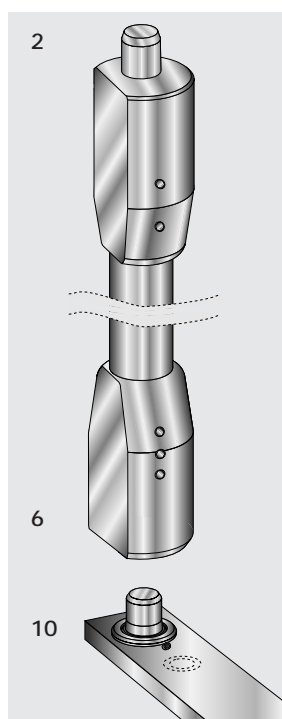
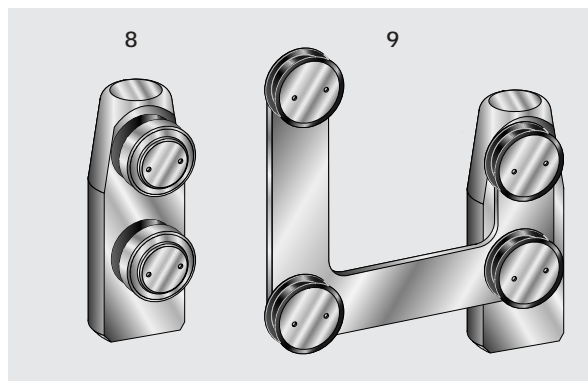
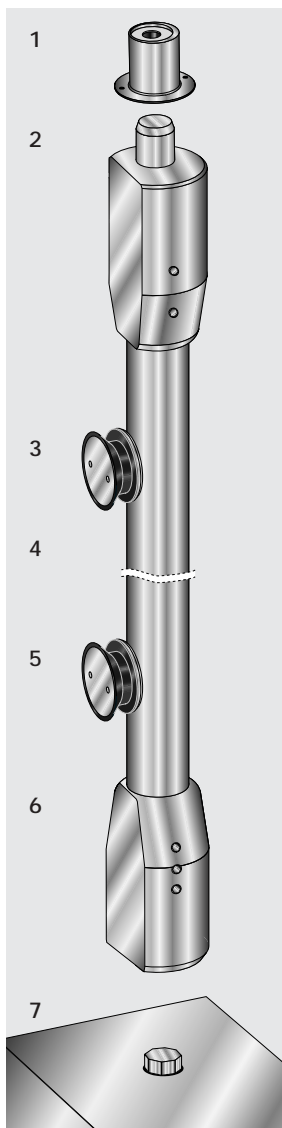
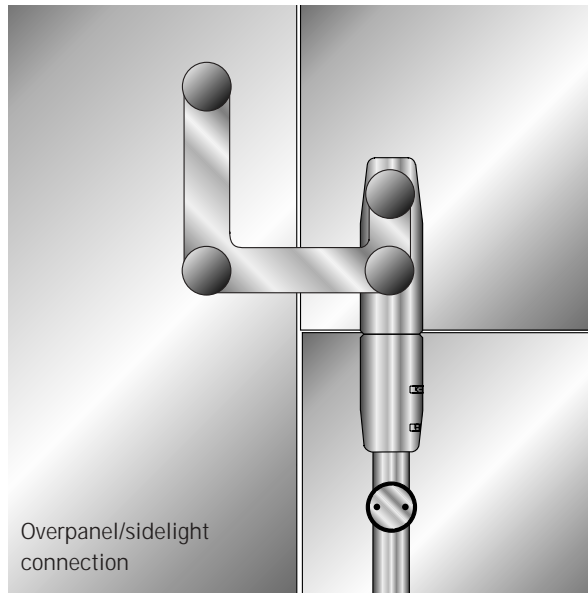
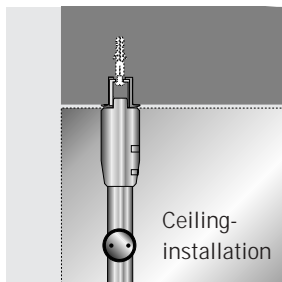
For 10 mm and 12 mm glass thickness. The accessories for swing doors have been created to harmonise with the MANET design theme. They are easy to install, and robust and secure in use. Doors can be specified for single or double action (please specify with order), and performance can be enhanced with floor springs from the DORMA BTS range. Overpanel and sidelight connectors ensure that swing doors can easily be fitted into toughened glass assemblies.



- A** Pivot pole with bearings
- B** Pivot pole, short type
- C** Pivot pole, short type with intermediate tube



## Pivot pole with bearings

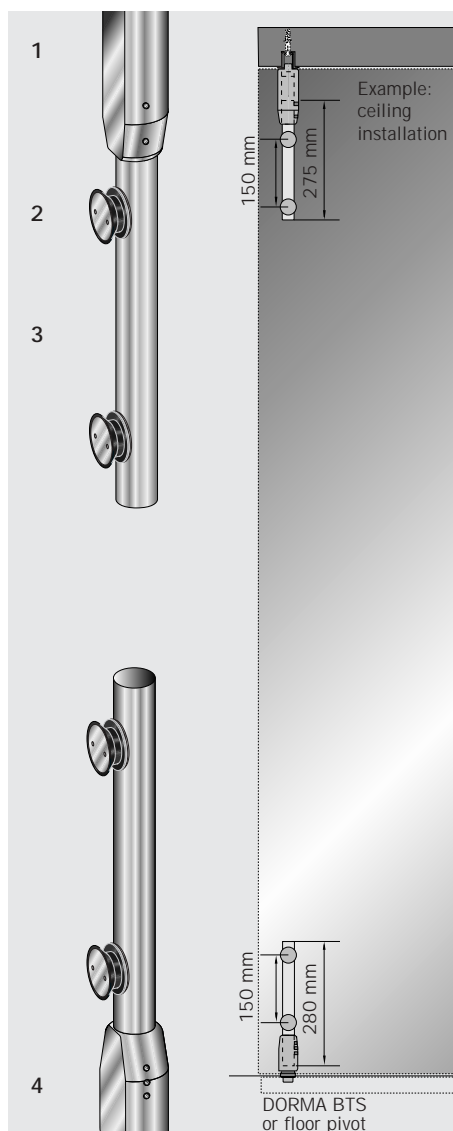


### Order details

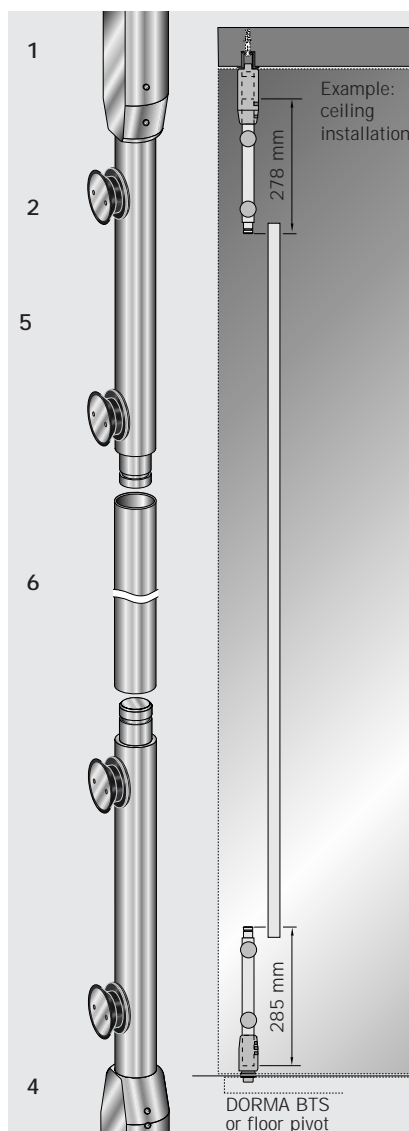
- 1**  
Eccentric bushing  
for top pivot pin  
or lock bolt  
Art.-no. 8.05.194.000.99
- 2**  
Pivot bearing for overpanel,  
overpanel/sidelight  
connection or ceiling  
installation  
length 90 mm  
Art.-no. 8.21.310.700.99
- 3**  
Single point fixing,  
adjustable  
for 10 (12) mm  
toughened glass  
Art.-no. 8.21.411.700.99
- 4**  
Pivot pole  
Art.-no. 8.21.300.700.99
- 5**  
Single point fixing,  
fixed for 10 (12) mm  
toughened glass  
Art.-no. 8.21.410.700.99
- 6**  
Bottom pivot bearing for  
DORMA BTS/floor bearing  
Art.-no. 8.21.311.700.99
- 7**  
DORMA-BTS  
floor spring
- 8**  
Pivot bearing location  
for overpanel for 10 mm  
(12 mm) toughened glass  
Art.-no. 8.21.333.700.99
- 9**  
Overpanel  
sidelight connector with  
pivot bearing location  
complete assembly  
for 10 mm toughened glass  
Art.-no. 8.21.330.700.99  
für 12 mm toughened glass  
Art.-no. 8.21.331.700.99
- 10**  
Floor pivot  
Art.-no. 8.01.106.700.99

### Pivot pole short types

### Pivot pole short type



### Pivot pole short type with intermediate tube



### Order details

#### 1 and 2

Types of pivot bearings  
and single point fixings  
see page 4/02

#### 3

Pair of pivot poles,  
top/bottom  
Art.-no. 8.21.302.700.99

#### 4

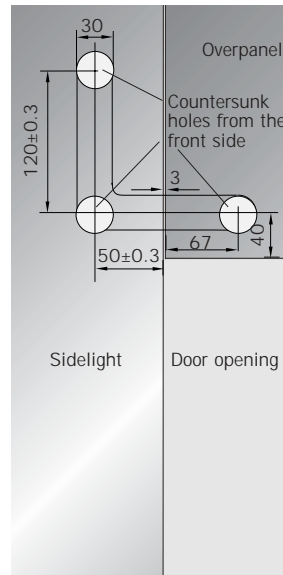
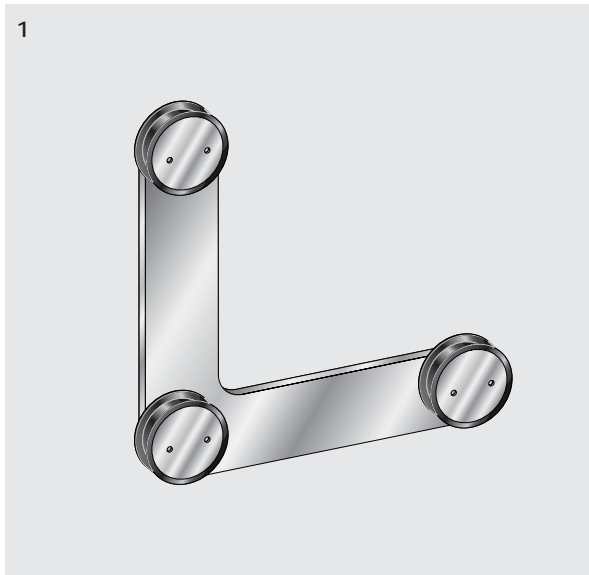
Pivot bearing for DORMA  
BTS or floor pivot  
see page 4/02

#### 5

Pair of pivot poles,  
for intermediate tube  
top/bottom  
Art.-no. 8.21.303.700.99

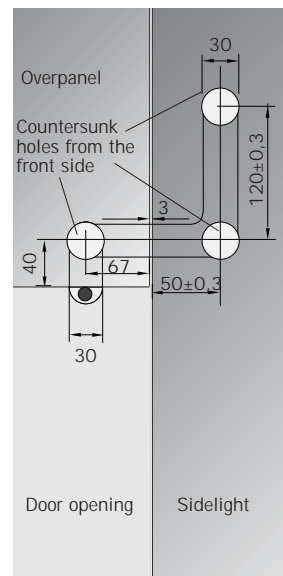
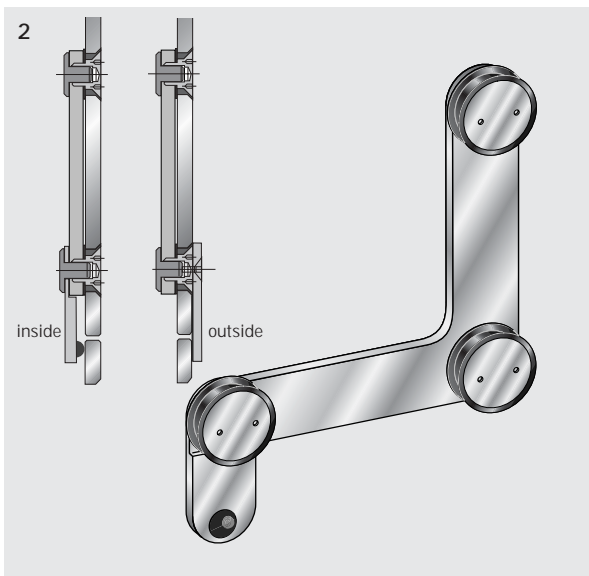
#### 6

Intermediate tube  
Ø 25 mm, fix length 2 m  
Art.-no. 8.21.304.700.99

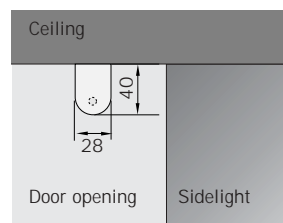
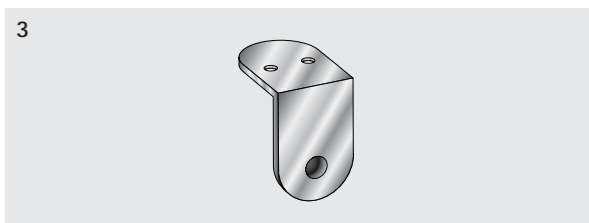


#### Order details

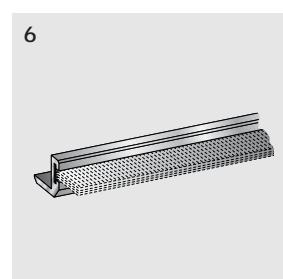
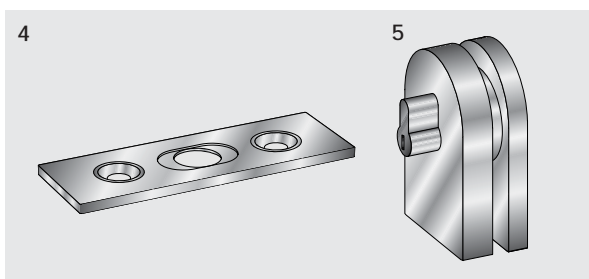
- 1**  
Overpanel/sidelight  
connector, complete fitting  
for 10 mm toughened glass  
Art.-no. 8.21.320.700.99  
for 12 mm toughened glass  
Art.-no. 8.21.321.700.99



- 2**  
Overpanel/sidelight  
connector with integrated  
stop, complete fitting  
for 10 mm toughened glass,  
inside  
Art.-no. 8.21.322.700.99  
outside  
Art.-no. 8.21.324.700.99  
for 12 mm toughened glass,  
inside  
Art.-no. 8.21.323.700.99  
outside  
Art.-no. 8.21.325.700.99



- 3**  
Stop for swing door with  
ceiling mounting  
Art.-no. 8.21.334.700.99

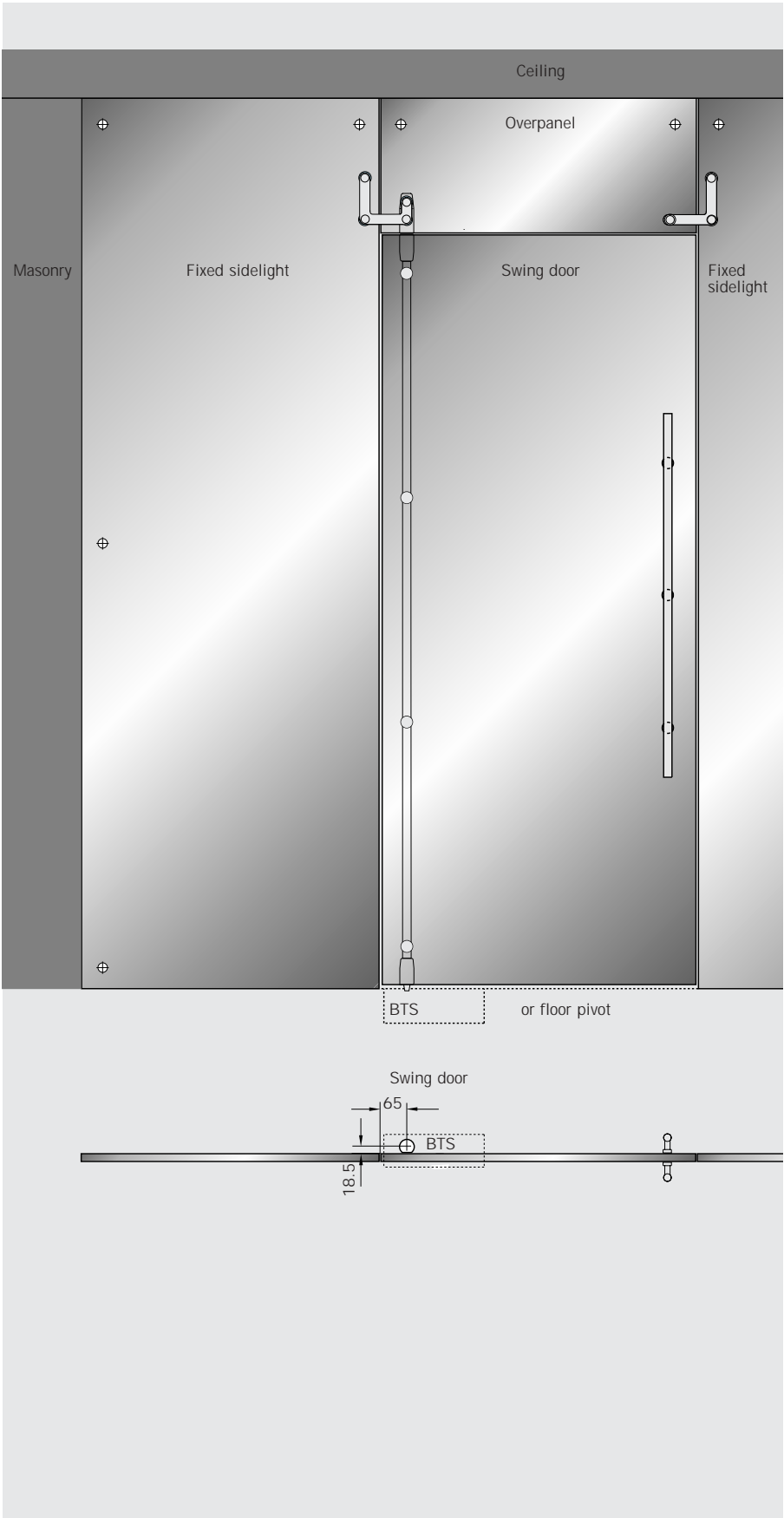


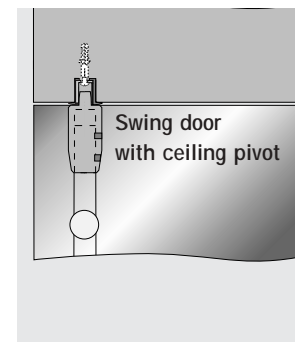
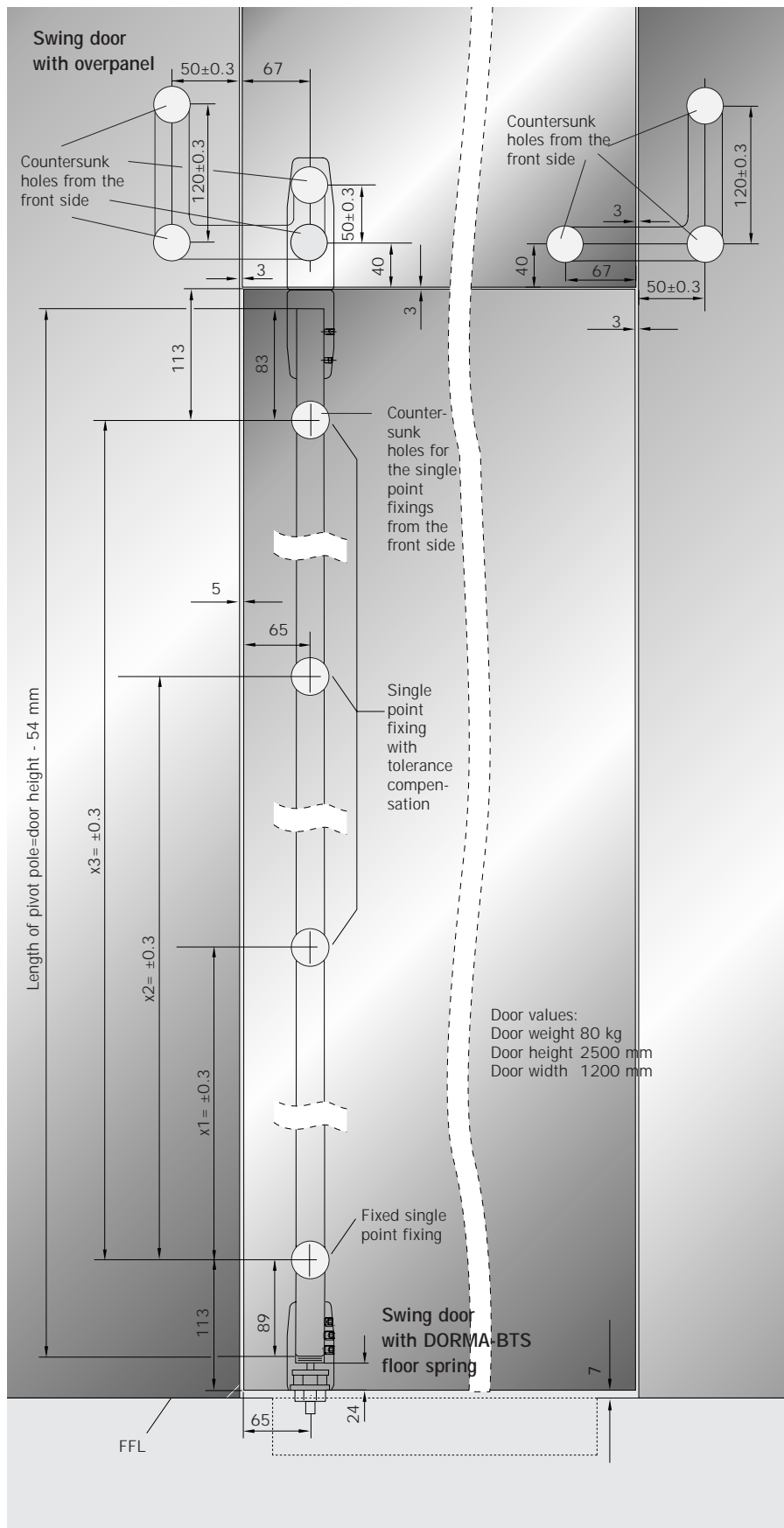
- 4**  
Strike plate  
Art.-no. 8.05.190.000.99

- 5**  
Top/bottom deadlock  
Art.-no. 8.14.400.700.99

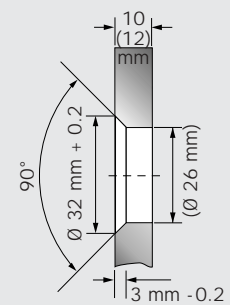
- 6**  
Aluminium brush profile  
fix length 1450 mm  
Art.-no. 8.21.414.113.99  
fix length 2530 mm  
Art.-no. 8.21.415.113.99  
fix length 3460 mm  
Art.-no. 8.21.416.113.99

Swing door  
with 2 sidelights  
and overpanel

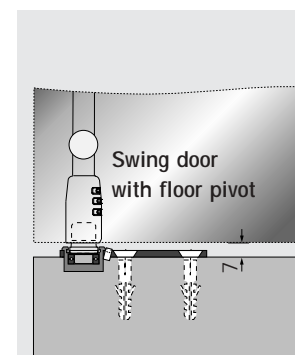




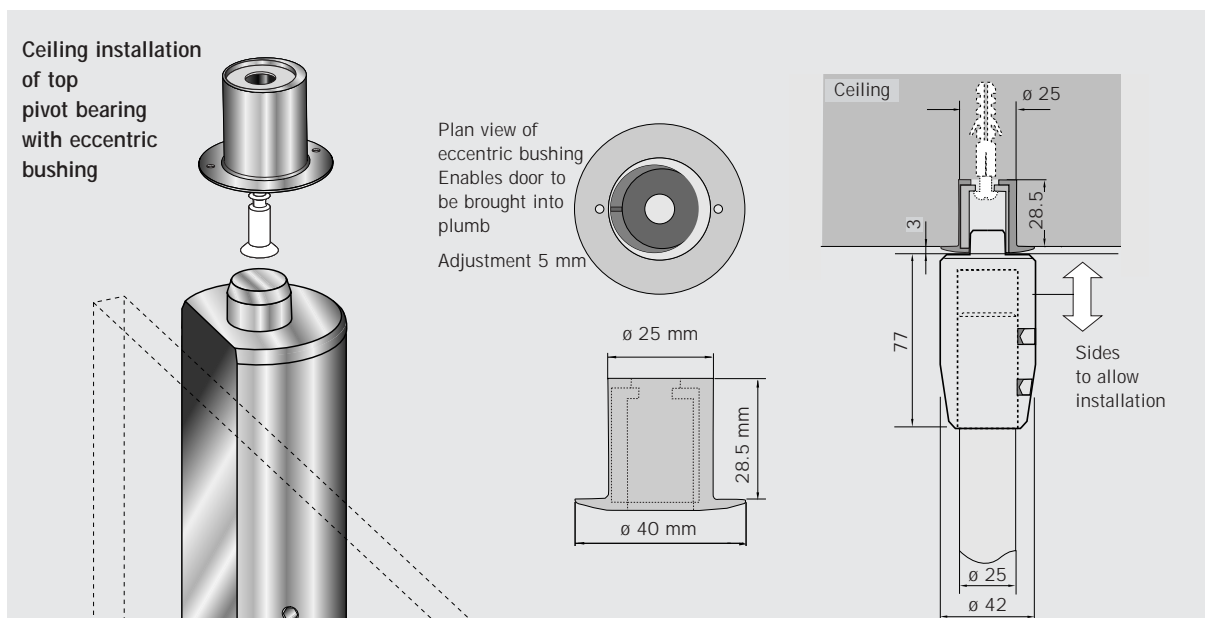
**Glass preparation swing door, sidelights and overpanel**



**Countersunk holes from the front side**



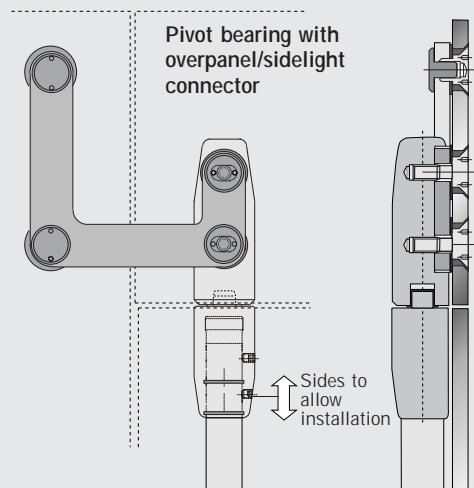
Ceiling installation  
of top  
pivot bearing  
with eccentric  
bushing



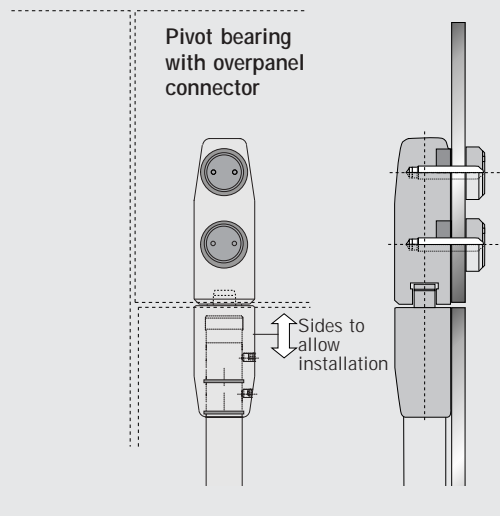
Installation of pivot bearing  
with overpanel/sidelight connector



Pivot bearing with  
overpanel/sidelight  
connector



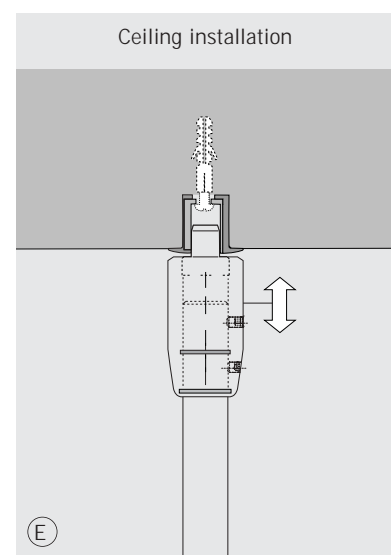
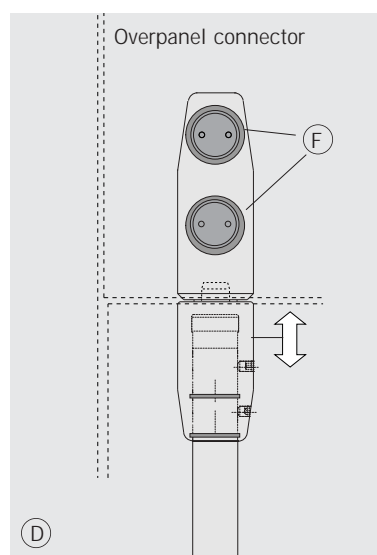
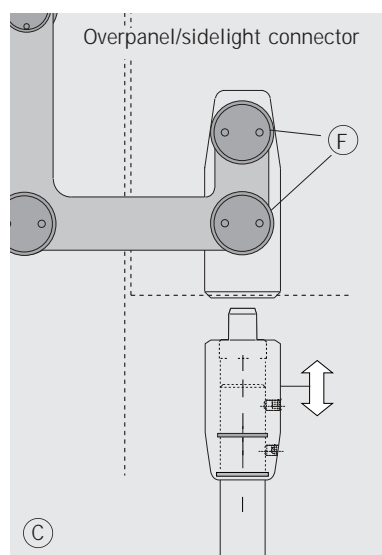
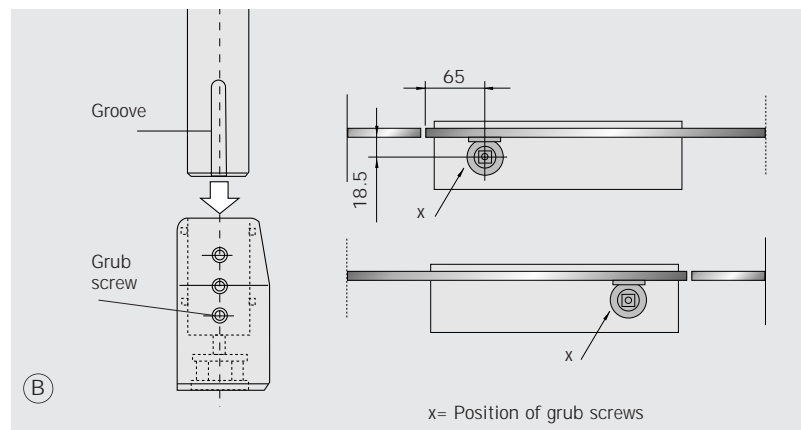
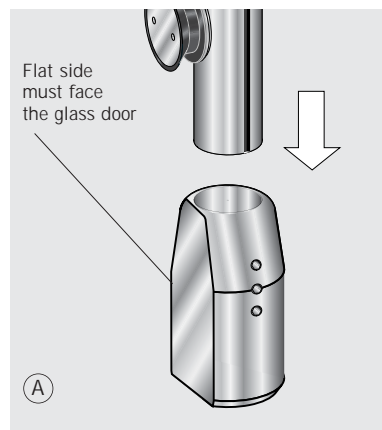
Pivot bearing  
with overpanel  
connector



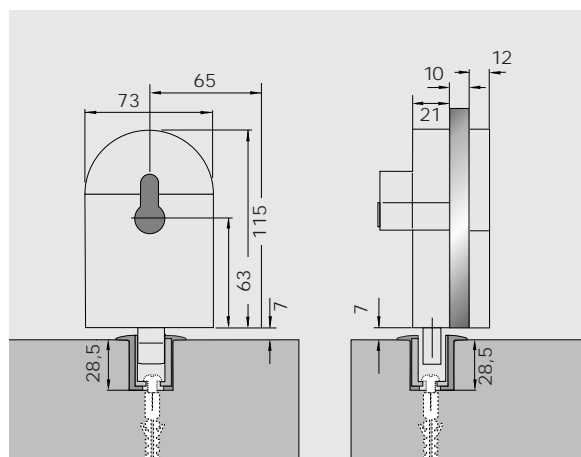
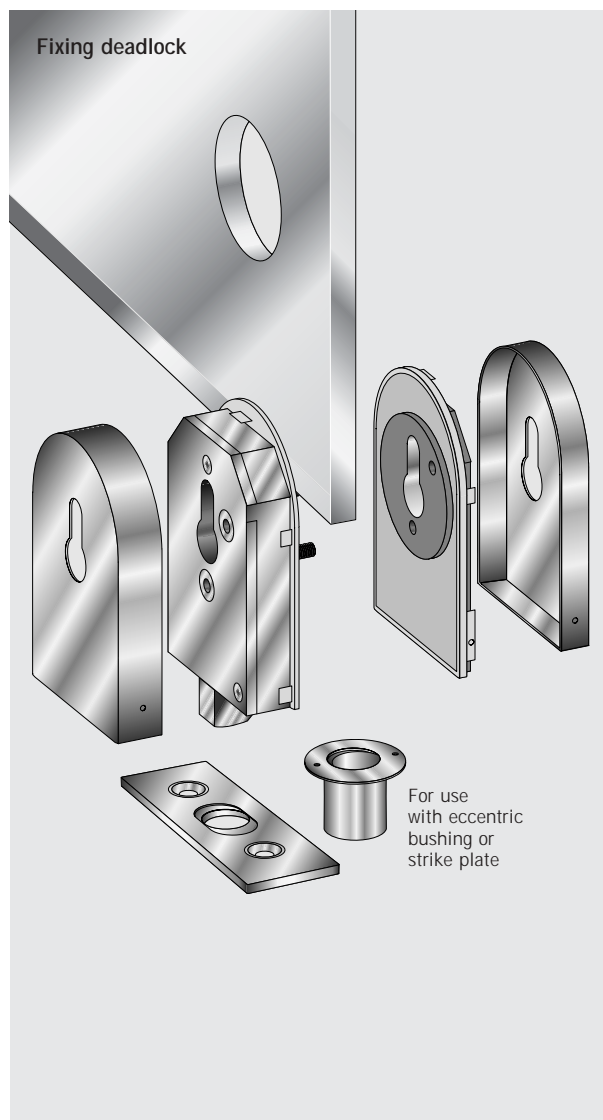


## Installation of swing door

1. Preparation: Install overpanel or ceiling bearing and floor bearing or floor spring according to specification.
2. Slide bottom pivot bearing (A) onto pivot pole upto stop. Make sure that grub screws line up with the groove (B). Secure with grub screws.



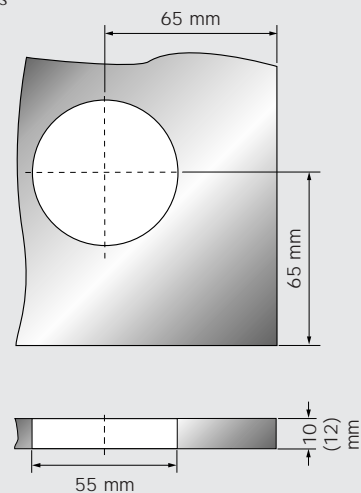
3. Slide stop pivot bearing ((C) (D) (E) according to installation situation) onto pivot pole. Notice fitting position: flat side of bearings and drilled holes for point fixings must face to the same direction (panel of glass door).
4. Set pivot pole with bottom pivot bearing onto floor bearing or floor spring.
5. Slide up top pivot bearing according to installation situation (C) (D) or (E) and secure with grub screws.
6. Set door panel to pivot pole and fix with single point fixings. The bottom single point is in a fix position while the others are with tolerance compensation (see page 4/02).
7. Adjustments:
  - Door height: via BTS (floor spring) +4 mm (see installation instruction of BTS, 4 adjustment screws). Further door height adjustment possible by using plastic washers between spindle and pivot pole - dismantling of door panel necessary. Notice upper door gap!
  - Zero position: via BTS
  - Bottom side gap: via BTS
  - Top side gap: Release screws (F) from top pivot bearing location by using special tool, adjust door, and tighten screws.



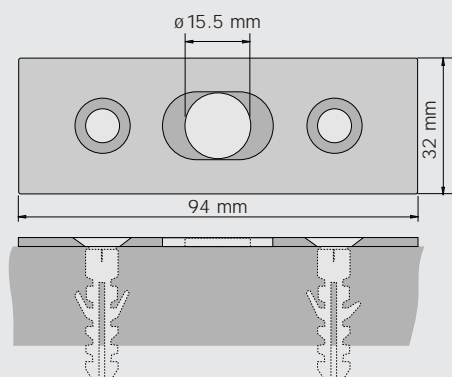
### Glass preparation

for 10 mm and 12 mm thick toughened glass

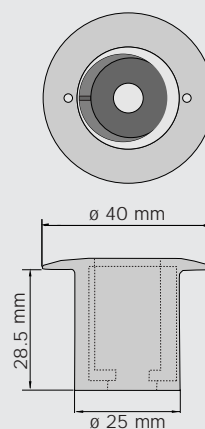
CNC machine glass preparation with a tolerance of max.  $\pm 0.3$  mm is recommended



Strike plate



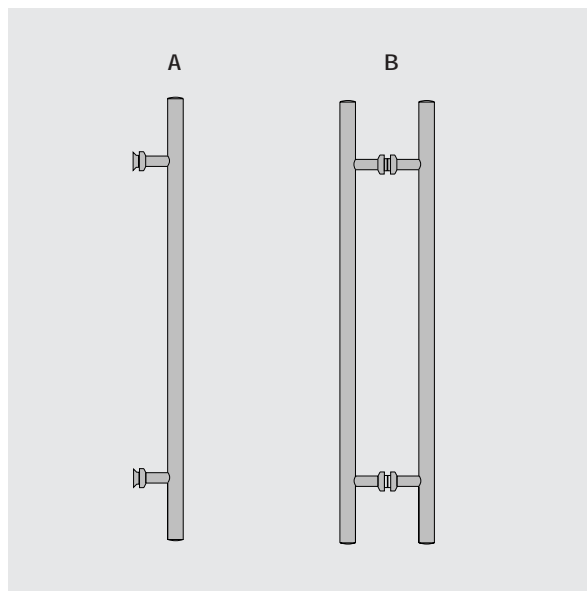
Eccentric bushing





## Handle bars

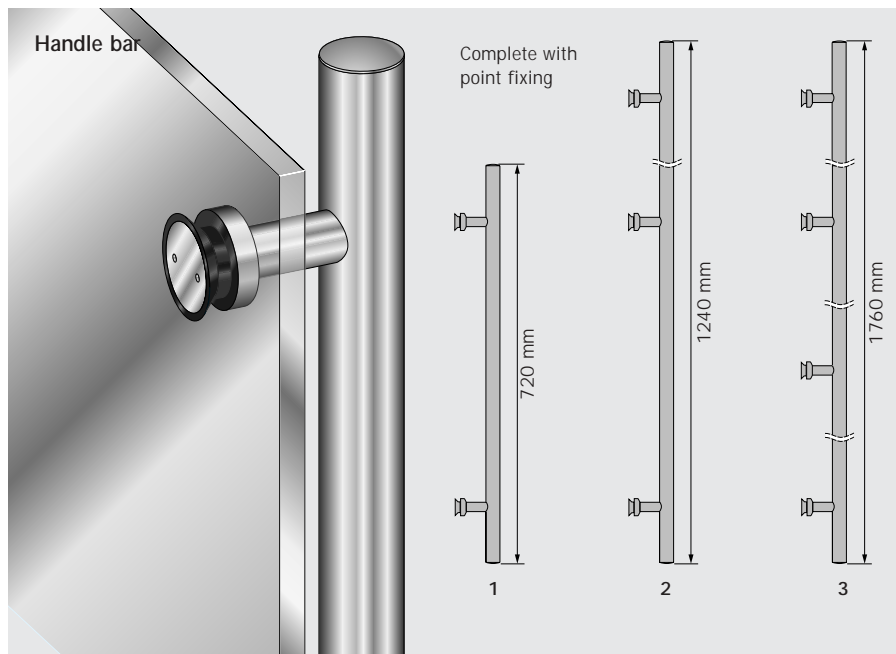
The handle bars for 10 mm and 12 mm toughened glass can be fixed to single or double action doors as single bars with appropriate fixings, or back-to-back with a connecting bolt. They can be used horizontally as well as vertically, or as handrails. Handle bars are supplied complete with point fixings or for back-to-back fixings with connecting bolts.



**A**  
Handle bar

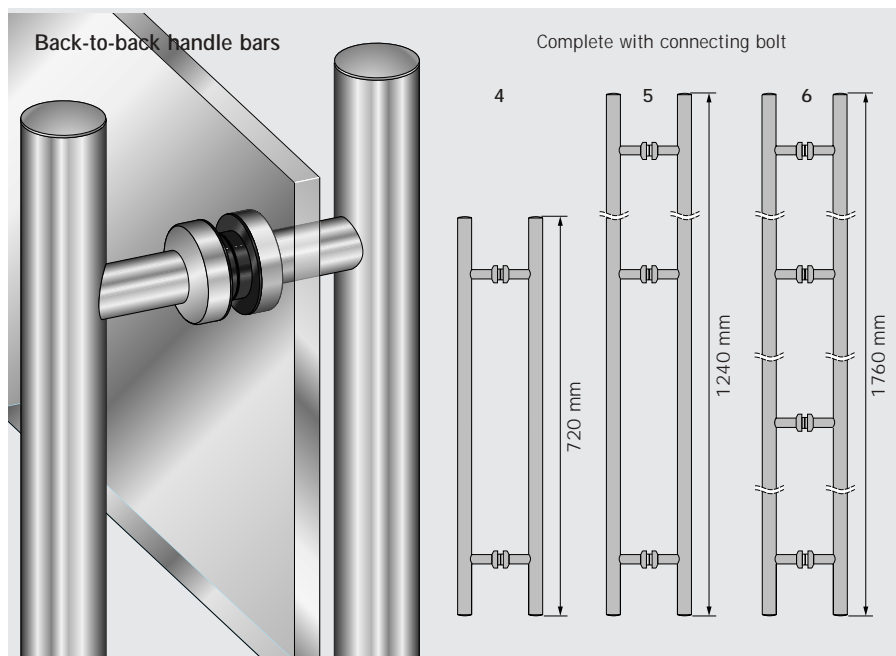
**B**  
Back-to-back handle bars





#### Order details

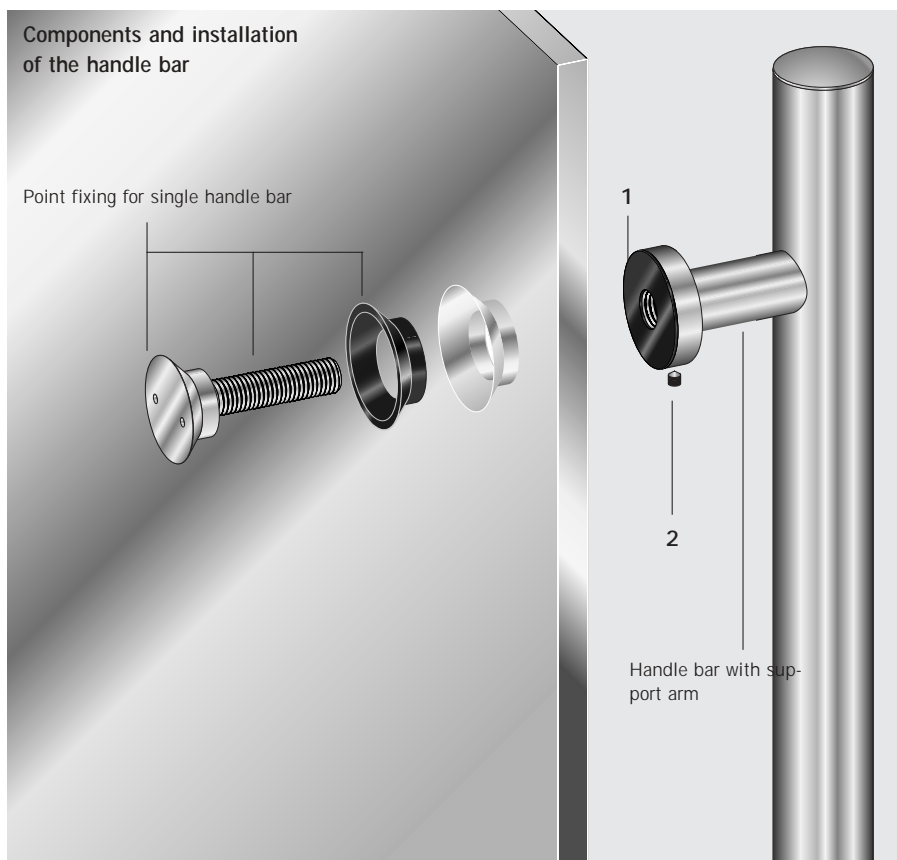
- 1**  
Handle bar 720 mm  
for 10 mm and 12 mm  
toughened glass  
Art.-no. 8.21.271.700.99
- 2**  
Handle bar 1240 mm  
for 10 mm and 12 mm  
toughened glass  
Art.-no. 8.21.274.700.99
- 3**  
Handle bar 1760 mm  
for 10 mm and 12 mm  
toughened glass  
Art.-no. 8.21.277.700.99



- 4**  
Back-to-back handle bars  
720 mm  
for 10 mm toughened glass  
Art.-no. 8.21.270.700.99  
für 12 mm toughened glass  
Art.-no. 8.21.272.700.99
- 5**  
Back-to-back handle bars  
1240 mm  
for 10 mm toughened glass  
Art.-no. 8.21.273.700.99  
für 12 mm toughened glass  
Art.-no. 8.21.275.700.99
- 6**  
Back-to-back handle bars  
1760 mm  
for 10 mm toughened glass  
Art.-no. 8.21.276.700.99  
für 12 mm toughened glass  
Art.-no. 8.21.278.700.99

### Components and installation of the handle bar

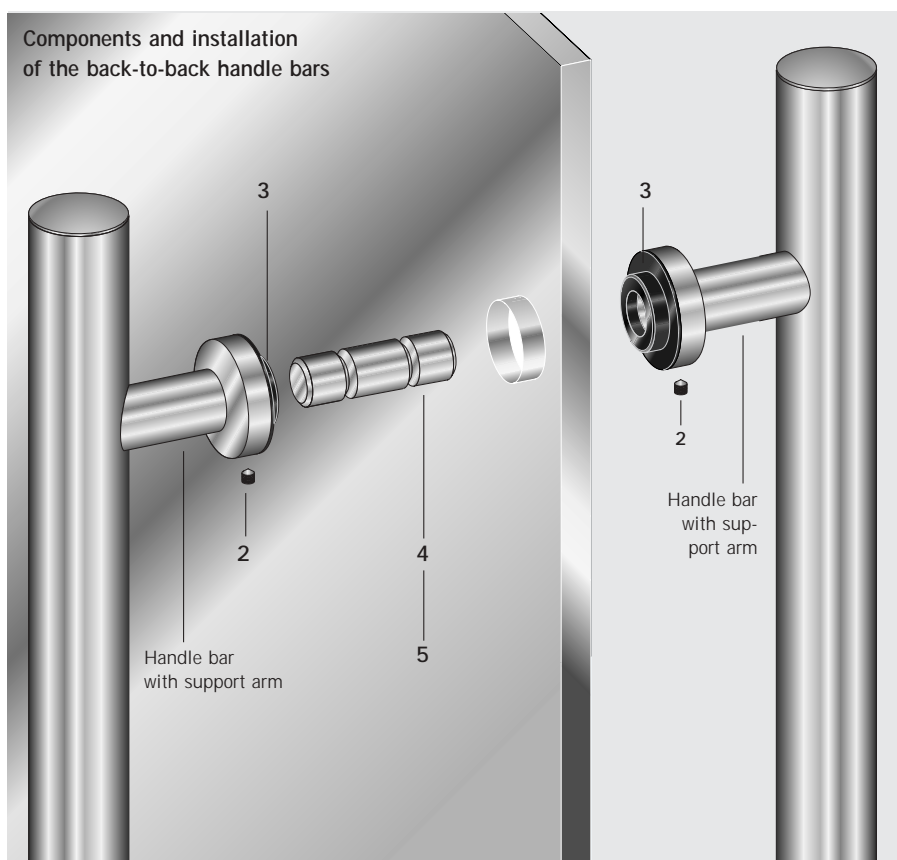
Point fixing for single handle bar



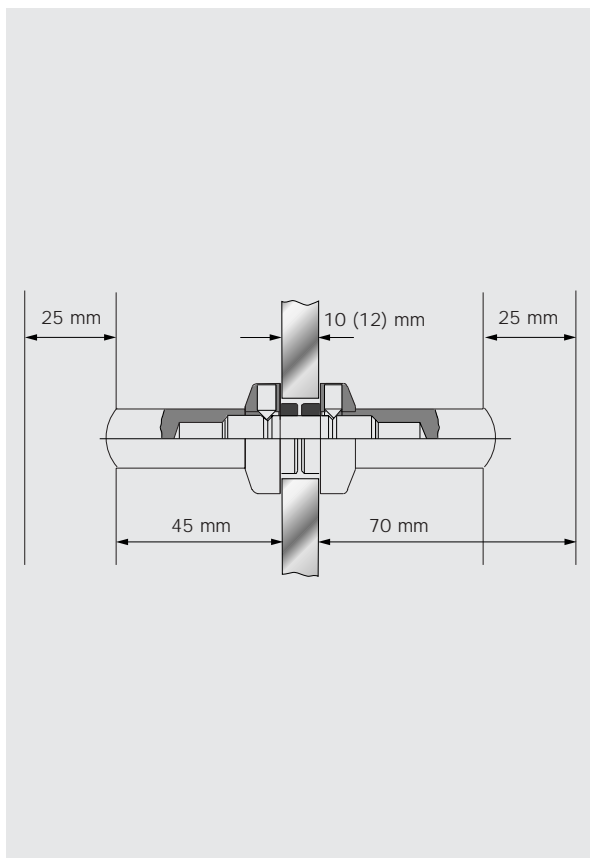
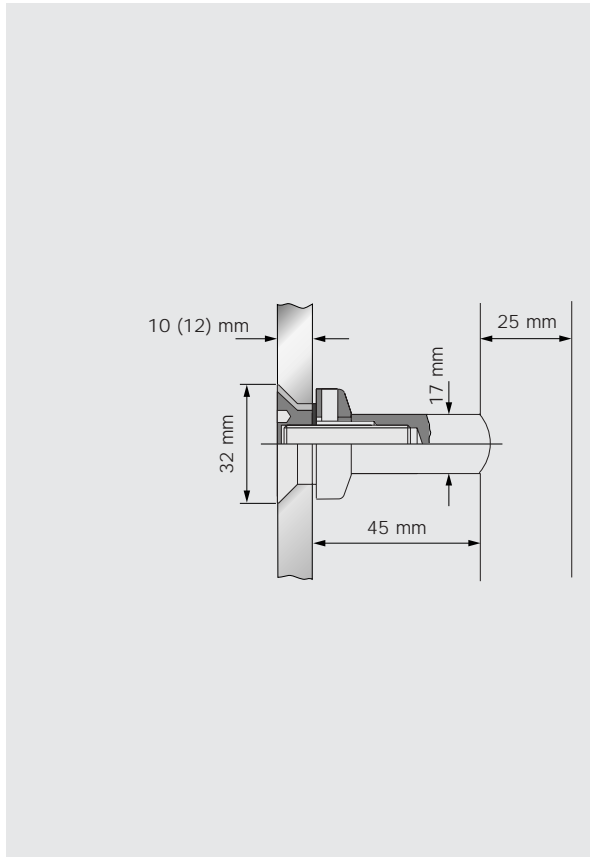
### Order details

- 1**  
Gasket  
8.21.980.070.40
- 2**  
Grub screw  
800.01.389.3.30
- 3**  
Conical sleeve  
8.21.980.080.40
- 4**  
Connecting bolt  
for 10 mm toughened glass  
8.21.980.060.40
- 5**  
Connecting bolt  
for 12 mm toughened glass  
8.21.980.061.40

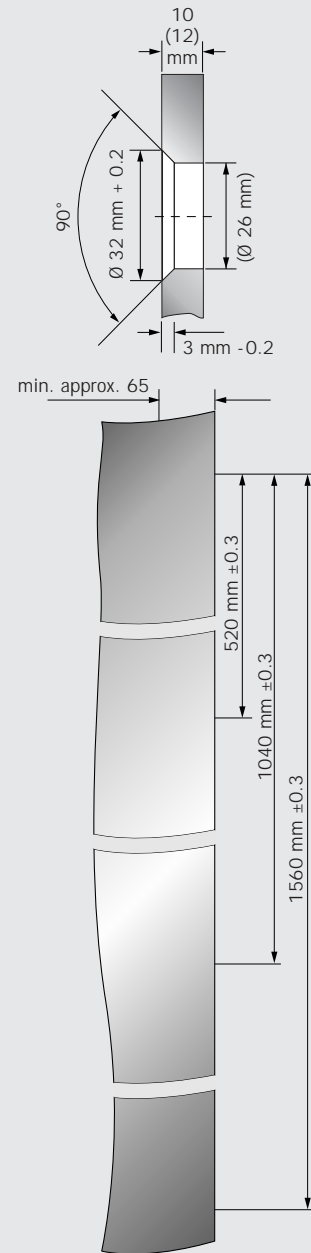
### Components and installation of the back-to-back handle bars



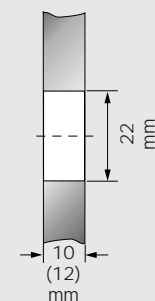
Single or back-to-back handle bars are supplied as complete assemblies. If components are lost or damaged, they can be ordered separately (see component price list)



# Glass preparation for 10 (12) mm toughened glass



For back-to-back fixing

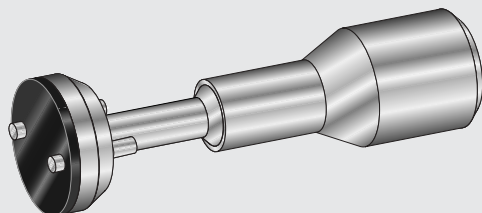


CNC machine glass preparation with a tolerance of max.  $\pm 0.3$  mm is recommended.

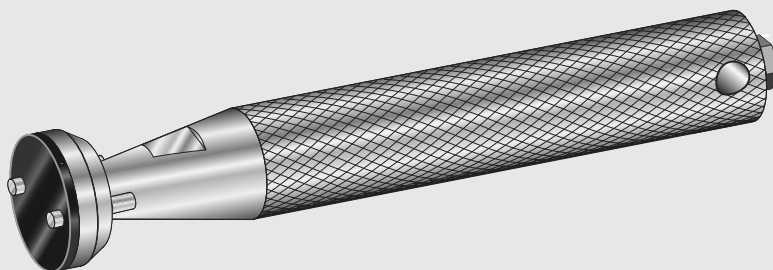


## Installation tools

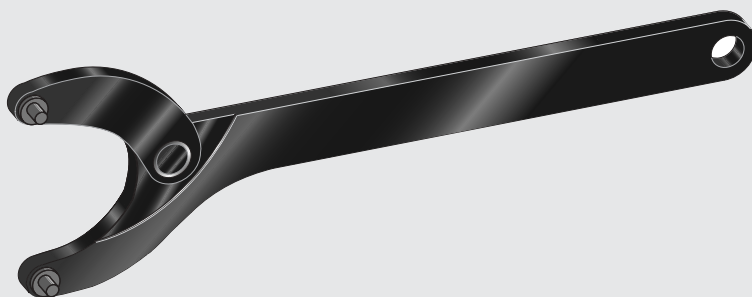
1



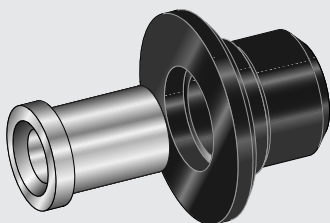
2



3



4



### Order details

1

Tool for fixing 1/2"

Art.-no. 8.21.135.000.99

2

Tool for manual locking

Art.-no. 8.21.136.000.99

3

Sickle spanner

Art.-no. 8.21.138.000.99

4

Mounting tool for drilling

Art.-no. 8.21.137.000.99